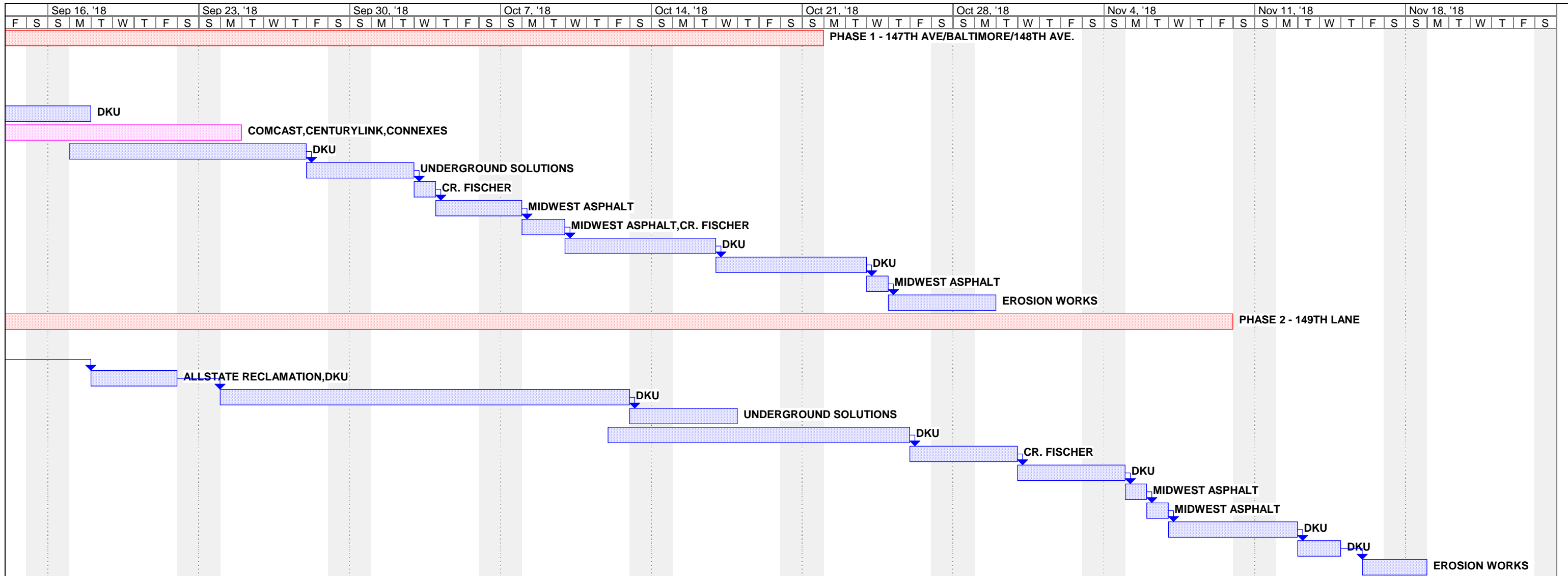


ID	Task Name	Duration	Start	Finish	Prec	Resource Names	Aug 12, '18							Aug 19, '18							Aug 26, '18							Sep 2, '18							Sep 9, '18																				
							T	F	S	S	M	T	W	T	F	S	S	M	T	W	T	F	S	S	M	T	W	T	F	S	S	M	T	W	T	F	S	S	M	T	W	T													
1	147TH AVE/BALTIMORE/148T	48.92 days	Mon 8/13/18	Mon 10/22/18		PHASE 1 - 147TH AVE/BALTIMORE/148TH AVE.	PHASE 1 - 147TH AVE/BALTIMORE/148TH AVE.																																																
2	TRAFFIC CONTROL	1 day?	Mon 8/13/18	Tue 8/14/18		ALL STATE TRAFFIC	ALL STATE TRAFFIC																																																
3	EROSION CONTROL	2 days	Tue 8/14/18	Thu 8/16/18	2	EROSION WORKS	EROSION WORKS																																																
4	RECLAIM AND REMOVALS	3 days	Thu 8/16/18	Tue 8/21/18	3	DKU,ALLSTATE RECLAMATION	DKU,ALLSTATE RECLAMATION																																																
5	CULVERTS	6 days	Fri 9/7/18	Mon 9/17/18	4	DKU	DKU																																																
6	SMALL UTILITIES	10 days	Tue 9/11/18	Tue 9/25/18		COMCAST,CENTURYLINK,CONNEXES	COMCAST,CENTURYLINK,CONNEXES																																																
7	GRADING	9 days	Mon 9/17/18	Fri 9/28/18		DKU	DKU																																																
8	TELEWISE CUVERTS AND ST	3 days	Fri 9/28/18	Wed 10/3/18	7	UNDERGROUND SOLUTIONS	UNDERGROUND SOLUTIONS																																																
9	CURB	1 day?	Wed 10/3/18	Thu 10/4/18	8	CR. FISCHER	CR. FISCHER																																																
10	BASE BIT	2 days	Thu 10/4/18	Mon 10/8/18	9	MIDWEST ASPHALT	MIDWEST ASPHALT																																																
11	BIT./CONCRETE DRIVEWAYS	2 days	Mon 10/8/18	Wed 10/10/18	10	MIDWEST ASPHALT,CR. FISCHER	MIDWEST ASPHALT,CR. FISCHER																																																
12	DITCH AND BLVD RESTORAT	5 days	Wed 10/10/18	Wed 10/17/18	11	DKU	DKU																																																
13	CLEAN-UP	5 days	Wed 10/17/18	Wed 10/24/18	12	DKU	DKU																																																
14	POSSIBLE WEAR COURSE	1 day?	Wed 10/24/18	Thu 10/25/18	13	MIDWEST ASPHALT	MIDWEST ASPHALT																																																
15	PERM. SEEDING	3 days	Thu 10/25/18	Tue 10/30/18	14	EROSION WORKS	EROSION WORKS																																																
16	149TH LANE	63.92 days	Fri 8/10/18	Fri 11/9/18		PHASE 2 - 149TH LANE	PHASE 2 - 149TH LANE																																																
17	TRAFFIC CONTROL	1 day?	Mon 8/20/18	Tue 8/21/18		ALL STATE TRAFFIC	ALL STATE TRAFFIC																																																
18	EROSION CONTROL	2 days	Tue 8/21/18	Thu 8/23/18	17	EROSION WORKS	EROSION WORKS																																																
19	REMOVALS	3.75 days	Tue 9/18/18	Fri 9/21/18	18	ALLSTATE RECLAMATION,DKU	ALLSTATE RECLAMATION,DKU																																																
20	STORM SEWER	14.75 days	Mon 9/24/18	Fri 10/12/18	19	DKU	DKU																																																
21	TELEWISE STORM	3 days	Fri 10/12/18	Wed 10/17/18	20	UNDERGROUND SOLUTIONS	UNDERGROUND SOLUTIONS																																																
22	GRADING	10 days	Fri 10/12/18	Fri 10/26/18		DKU	DKU																																																
23	CURB AND CONCRETE DRIVI	3 days	Fri 10/26/18	Wed 10/31/18	22	CR. FISCHER	CR. FISCHER																																																
24	TOLERANCE	3 days	Wed 10/31/18	Mon 11/5/18	23	DKU	DKU																																																
25	BASE BIT.	1 day?	Mon 11/5/18	Tue 11/6/18	24	MIDWEST ASPHALT	MIDWEST ASPHALT																																																
26	BIT. DRIVEWAYS	1 day?	Tue 11/6/18	Wed 11/7/18	25	MIDWEST ASPHALT	MIDWEST ASPHALT																																																
27	BLVD ROUGH GRADING/BAC	4 days	Wed 11/7/18	Tue 11/13/18	26	DKU	DKU																																																
28	TOPSOIL	1.92 days	Tue 11/13/18	Thu 11/15/18	27	DKU	DKU																																																
29	PERM. SEEDING	1 day?	Fri 11/16/18	Mon 11/19/18	28	EROSION WORKS	EROSION WORKS																																																

Project: SCHEDULE
Date: Mon 9/10/18

Task: Progress: Summary: External Tasks: Deadline: Split: Milestone: Project Summary: External Milestone:

Page 1



Project: SCHEDULE
Date: Mon 9/10/18

Task		Progress		Summary		External Tasks		Deadline	
Split		Milestone		Project Summary		External Milestone			