

MINNESOTA DEPARTMENT OF TRANSPORTATION

City of Ham Lake, Minnesota

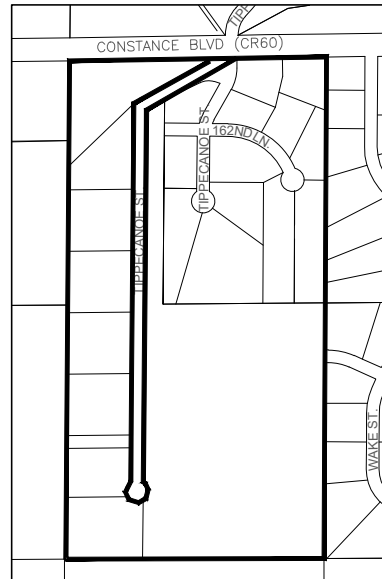
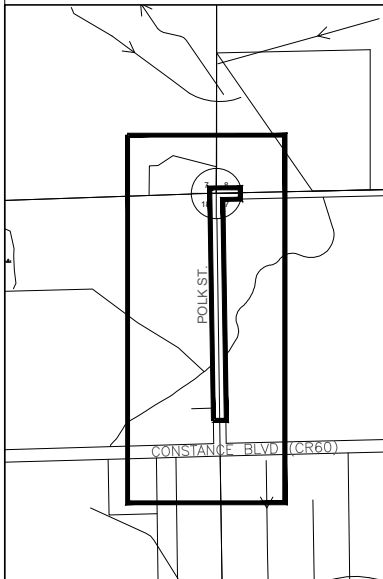
CONSTRUCTION PLAN FOR TREE AND STUMP REMOVAL, CLEARING, GRUBBING

HAM LAKE PROJECT NO. 2108
POLK STREET

CLEARING AREA 0.65 ACRES
 CLEARING AREA 3 EACH
 GRUBBING AREA 0.65 ACRES
 GRUBBING AREA 3 EACH
 REF. POINT 325' NORTH OF CONSTANCE BLVD
 TO REF. POINT 165TH AVE

HAM LAKE PROJECT NO. 2109
TIPPECANOE STREET

CLEARING AREA 0.2 ACRES
 CLEARING AREA 43 EACH
 GRUBBING AREA 0.2 ACRES
 GRUBBING AREA 43 EACH
 REF. POINT CONSTANCE BLVD
 TO REF. POINT TIPPECANOE

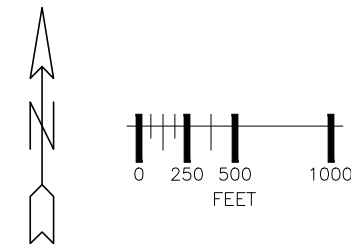
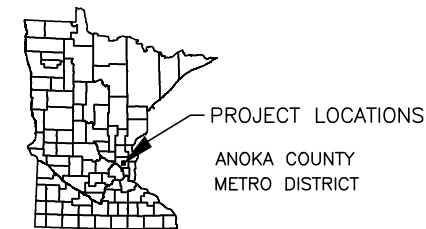
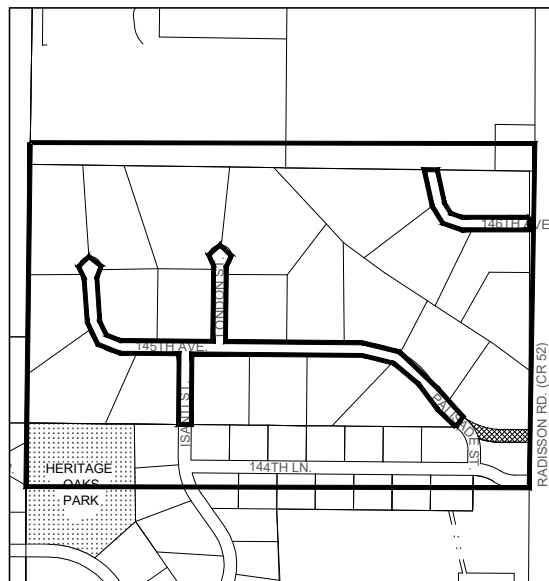
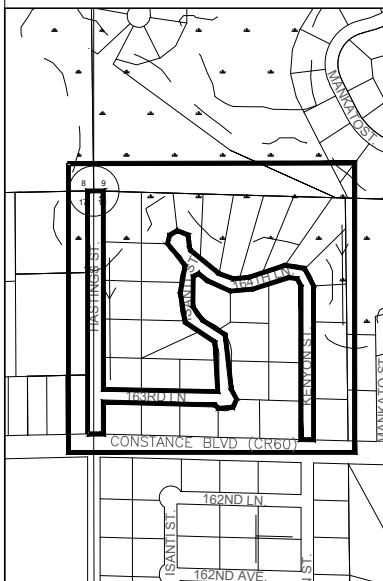


HAM LAKE PROJECT NO. 2103
MEADOW PARK

CLEARING AREA 0.9 ACRES
 CLEARING AREA 99 EACH
 GRUBBING AREA 0.9 ACRES
 GRUBBING AREA 99 EACH
 REF. POINT CONSTANCE BLVD
 TO REF. POINT CONSTANCE BLVD

HAM LAKE PROJECT NO. 2105
CREEK VALLEY

CLEARING AREA 0.1 ACRES
 CLEARING AREA 97 EACH
 GRUBBING AREA 0.1 ACRES
 GRUBBING AREA 97 EACH
 REF. POINT 230' NORTH OF 144TH LN
 TO REF. POINT 215' NORTH OF 144TH LN



PLAN REVISIONS		
DATE	SHEET NO.	APPROVED BY
3/15/2022	ALL	DAK

GOVERNING SPECIFICATIONS
 THE 2020 EDITION OF THE MINNESOTA DEPARTMENT OF TRANSPORTATION
 "STANDARD SPECIFICATIONS FOR CONSTRUCTION" VOLUME 1 AND VOLUME 2
 SHALL GOVERN ALL TRAFFIC.

INDEX	
SHEET NO.	DESCRIPTION
1	TITLE SHEET
2	TREE REMOVAL, POLK STREET
3-4	TREE REMOVAL, TIPPECANOE STREET
5-8	TREE REMOVAL, MEADOW PARK
9-12	TREE REMOVAL, CREEK VALLEY

ALL APPLICABLE FEDERAL, STATE AND LOCAL LAWS AND ORDINANCES
 WILL BE COMPLIED WITH IN THE CONSTRUCTION OF THIS PROJECT.

THIS PLAN CONTAINS 12 SHEETS

I HEREBY CERTIFY THAT THIS PLAN WAS PREPARED BY ME OR UNDER MY
 DIRECT SUPERVISION AND THAT I AM A DULY LICENSED PROFESSIONAL
 ENGINEER UNDER THE LAWS OF THE STATE OF MINNESOTA.

SIGNED: *David Krueger*
 DATE: 2/3/22 REG. NO. 48768

APPROVED: *Thomas P. Collins* DATE: 2/3/22
 CITY ENGINEER - HAM LAKE

RFC ENGINEERING, INC.

Consulting Engineers

13635 Johnson Street NE Telephone 763-862-8000
 Ham Lake, MN 55304 Fax 763-862-8042

JOB NO. 2202.035
 FILE: 34-2-100 SHEET NO. 1 OF 12 SHEETS

PLAN SYMBOLS

- EXISTING CENTERLINE
- PROPOSED CENTERLINE
- EXISTING RIGHT-OF-WAY LINE
- PROPOSED RIGHT-OF-WAY LINE
- CONSTRUCTION PERMANENT EASEMENT LINE
- LOT SECTION PROPERTY LINE
- CONSTRUCTION LIMITS CLEAR ZONE
- EXISTING CONTOURS
- PROPOSED CONTOURS
- DITCH LINE
- FENCE LINE - ANY TYPE
- SILT FENCE
- WETLAND BOUNDARY
- EXISTING TREES (TO REMAIN)
- BENCH MARK / IRON MONUMENT
- LIGHT POLE / BOLLARD
- SOIL BORING
- BUILDING
- PROPOSED RIPRAP
- MAILBOX
- EXISTING SIGN
- PROPOSED SIGN

UTILITY SYMBOLS

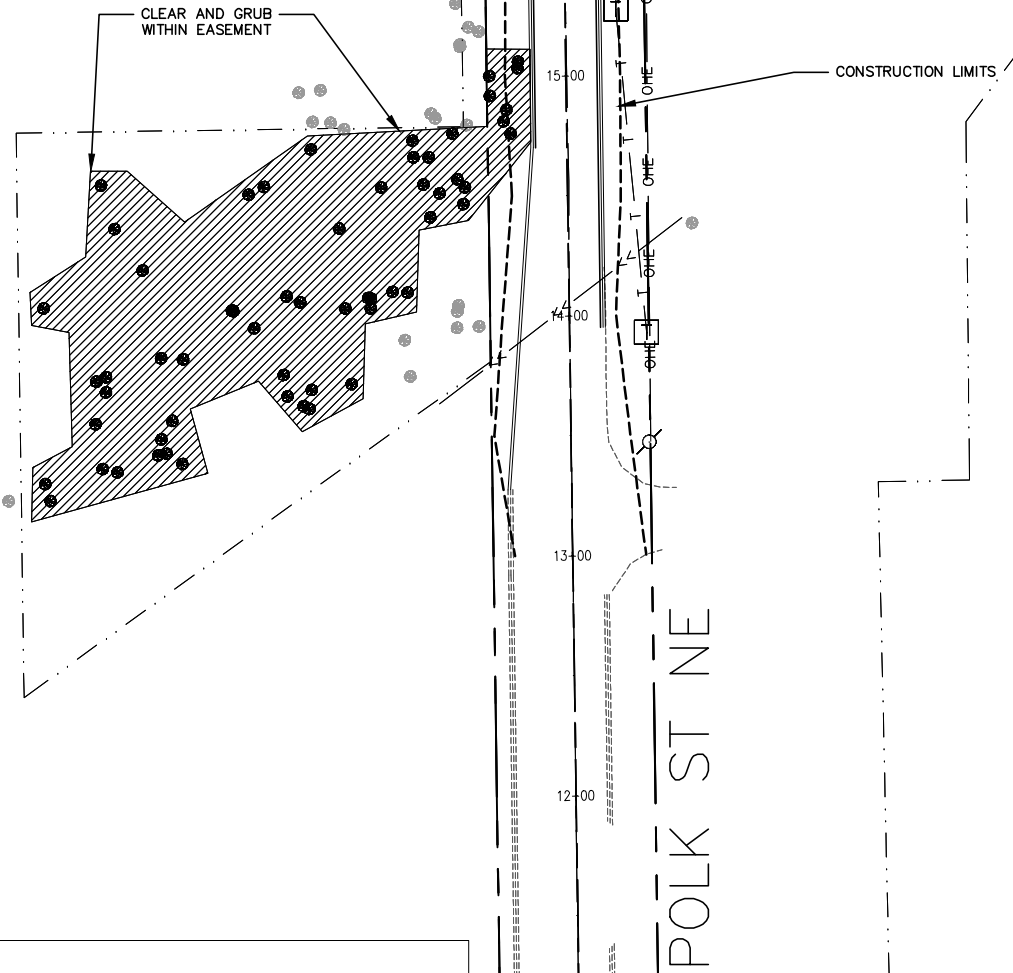
- GAS LINE
- PETROLEUM LINE
- ELECTRIC
- UNDERGROUND TELEPHONE LINE
- UNDERGROUND CABLE TV LINE
- UNDERGROUND FIBER OPTIC LINE
- TELEPHONE STRUCTURES
- ELECTRIC JUNC. BOX
- CABLE TV JUNC. BOX
- FIBER OPTIC STRUCTURES
- POWER POLE AND GUY WIRE
- STORM DRAIN LINE
- FLARED END SECTION
- CATCH BASIN
- MANHOLE
- WELL

HATCH LEGEND

- BITUMINOUS
- CONCRETE
- EROSION CONTROL
- GRAVEL
- HYDROMULCH
- REMOVAL
- GRAVEL
- CONCRETE
- BITUMINOUS

MATCHLINE

POLK STREET NE	
CLEARING (TREE)	1
GRUBBING (TREE)	1
CLEARING (ACRE)	0.40
GRUBBING (ACRE)	0.40



LEGEND

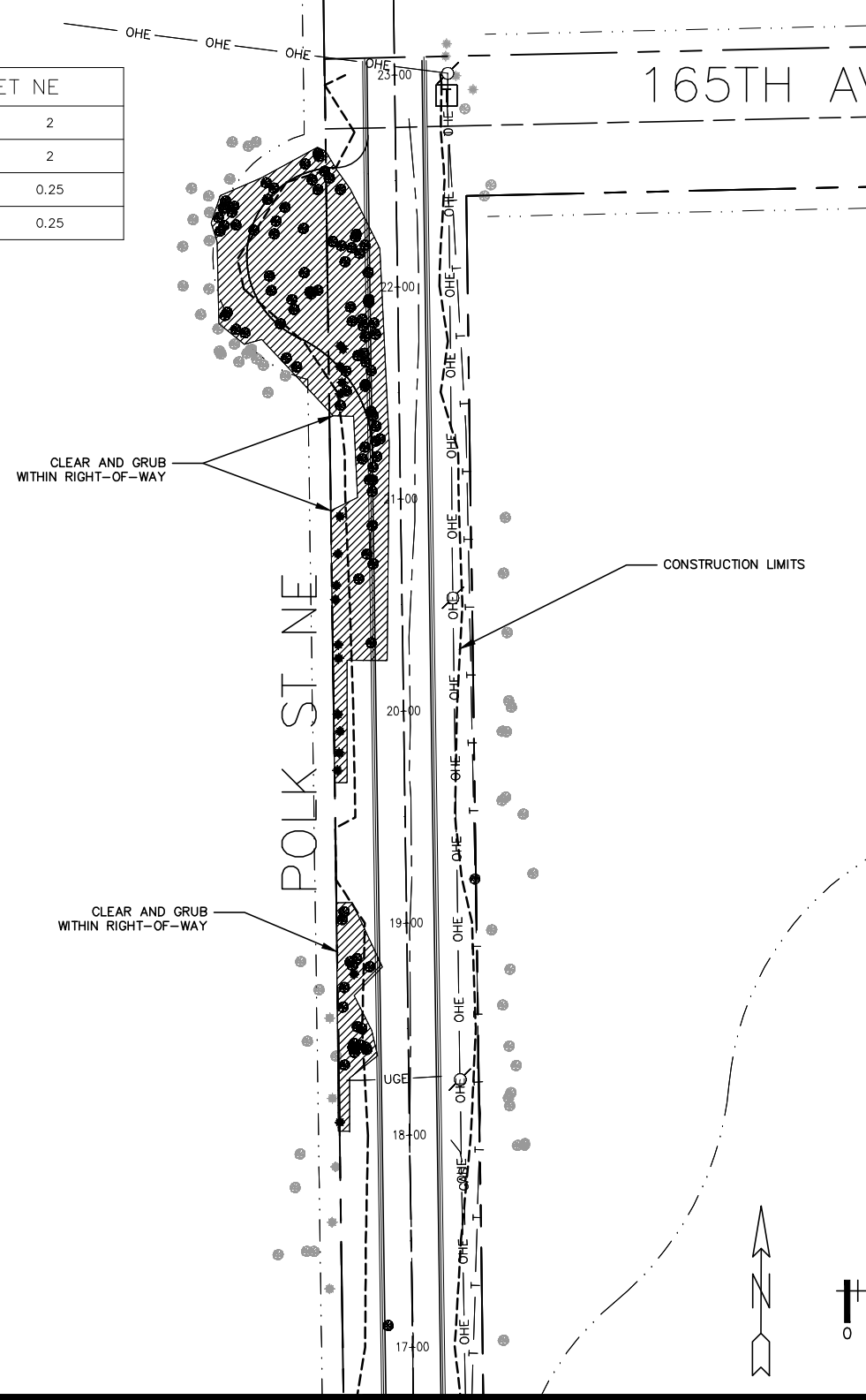
- TREES TO REMOVE (ACRE)
- TREES TO REMOVE (EACH)
- TREES TO REMAIN

- NOTES:**
- ALL DISTURBED AREAS TO BE SEEDED, MULCHED AND FERTILIZED WITHIN 7 DAYS OF ROUGH GRADING.
 - SEE TREE REMOVAL SHEETS FOR DETAILS ON TREE REMOVAL.
 - ALL LOCATIONS OF STOCKPILES SHALL BE SUBMITTED FOR THE CITY ENGINEERS APPROVAL PRIOR TO STOCKPILING. ALL EROSION CONTROL FOR STOCKPILES SHALL BE PER BMP'S AND SWPPP.
 - ALL SILT FENCE MUST BE IN PLACE BEFORE ANY LAND IS DISTURBED.

CONSTANCE BOULEVARD (CR60)

MATCHLINE

POLK STREET NE	
CLEARING (TREE)	2
GRUBBING (TREE)	2
CLEARING (ACRE)	0.25
GRUBBING (ACRE)	0.25



165TH AVE NE



UTILITIES:	CENTURYLINK	(763) 712-5017
	CENTERPOINT ENERGY	(763) 323-2760
	COMCAST	(952) 607-4078
	CONNEXUS ENERGY	(763) 323-4268
	GREAT RIVERS ENERGY	(763) 445-5984
	XCEL ENERGY	(612) 526-4508

DATE	REVISION HISTORY
3/15/22	REMOVAL AREAS

I HEREBY CERTIFY THAT THIS PLAN WAS PREPARED BY ME OR UNDER MY DIRECT SUPERVISION AND THAT I AM A DULY REGISTERED PROFESSIONAL ENGINEER UNDER THE LAWS OF THE STATE OF MINNESOTA.

Dore Krough

DATE 2/3/2022 REG. NO. 48768

RFC ENGINEERING, INC.
Consulting Engineers

13635 Johnson Street
Ham Lake, MN 55304
Telephone 763-862-8000
Fax 763-862-8042

HAM LAKE IMPROVEMENT PROJECT
POLK ST, TIPPECANOE ST, MEADOW PARK, CREEK VALLEY

POLK STREET NE
TREE REMOVAL PLAN

DESIGN BY: DAK DRAWN BY: KDD CHECKED BY: TPC

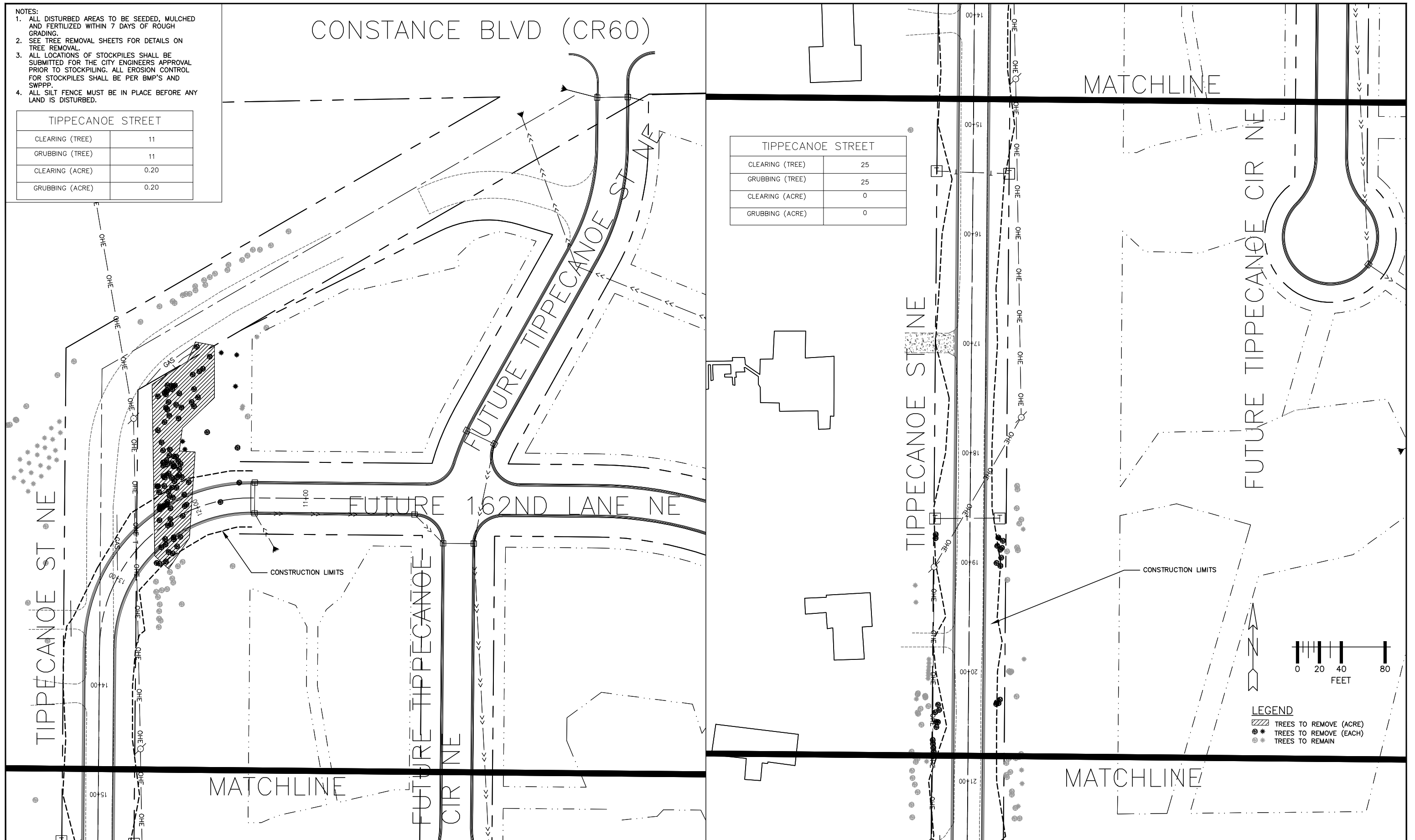
DWG:	2108 REMOVAL
DATE:	2/3/2022
JOB NUMBER:	2202.035
SHEET:	2 OF 12
FILE:	34-2-102

- NOTES:
1. ALL DISTURBED AREAS TO BE SEEDED, MULCHED AND FERTILIZED WITHIN 7 DAYS OF ROUGH GRADING.
 2. SEE TREE REMOVAL SHEETS FOR DETAILS ON TREE REMOVAL.
 3. ALL LOCATIONS OF STOCKPILES SHALL BE SUBMITTED FOR THE CITY ENGINEERS APPROVAL PRIOR TO STOCKPILING. ALL EROSION CONTROL FOR STOCKPILES SHALL BE PER BMP'S AND SWPPP.
 4. ALL SILT FENCE MUST BE IN PLACE BEFORE ANY LAND IS DISTURBED.

TIPPECANOE STREET	
CLEARING (TREE)	11
GRUBBING (TREE)	11
CLEARING (ACRE)	0.20
GRUBBING (ACRE)	0.20

CONSTANCE BLVD (CR60)

TIPPECANOE STREET	
CLEARING (TREE)	25
GRUBBING (TREE)	25
CLEARING (ACRE)	0
GRUBBING (ACRE)	0



LEGEND
 [Hatched Box] TREES TO REMOVE (ACRE)
 [Solid Circle] TREES TO REMOVE (EACH)
 [Open Circle] TREES TO REMAIN

UTILITIES:

CENTURYLINK	(763) 712-5017
CENTERPOINT ENERGY	(763) 323-2760
COMCAST	(952) 607-4078
CONNEXUS ENERGY	(763) 323-4268
GREAT RIVERS ENERGY	(763) 445-5984
XCEL ENERGY	(612) 526-4508

800-252-1166 651-454-0002

DATE	REVISION HISTORY
3/15/22	REMOVAL AREAS

I HEREBY CERTIFY THAT THIS PLAN WAS PREPARED BY ME OR UNDER MY DIRECT SUPERVISION AND THAT I AM A DULY REGISTERED PROFESSIONAL ENGINEER UNDER THE LAWS OF THE STATE OF MINNESOTA.

Dore Krueger
 DATE 2/3/2022 REG. NO. 48768

RFC ENGINEERING, INC.
Consulting Engineers

13635 Johnson Street
 Ham Lake, MN 55304
 Telephone 763-862-8000
 Fax 763-862-8042

HAM LAKE IMPROVEMENT PROJECT
 POLK ST, TIPPECANOE ST, MEADOW PARK, CREEK VALLEY

TIPPECANOE STREET NE
 TREE REMOVAL PLAN

DWG: 2109 REMOVAL_1
 DATE: 2/3/2022
 JOB NUMBER: 2202.035
 SHEET: 3 OF 12
 FILE: 34-2-103

DESIGN BY: DAK DRAWN BY: KDD CHECKED BY: TPC

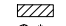


MATCHLINE

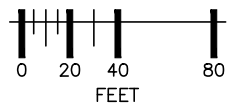
MATCHLINE

TIPPECANOE STREET	
CLEARING (TREE)	3
GRUBBING (TREE)	3
CLEARING (ACRE)	0
GRUBBING (ACRE)	0

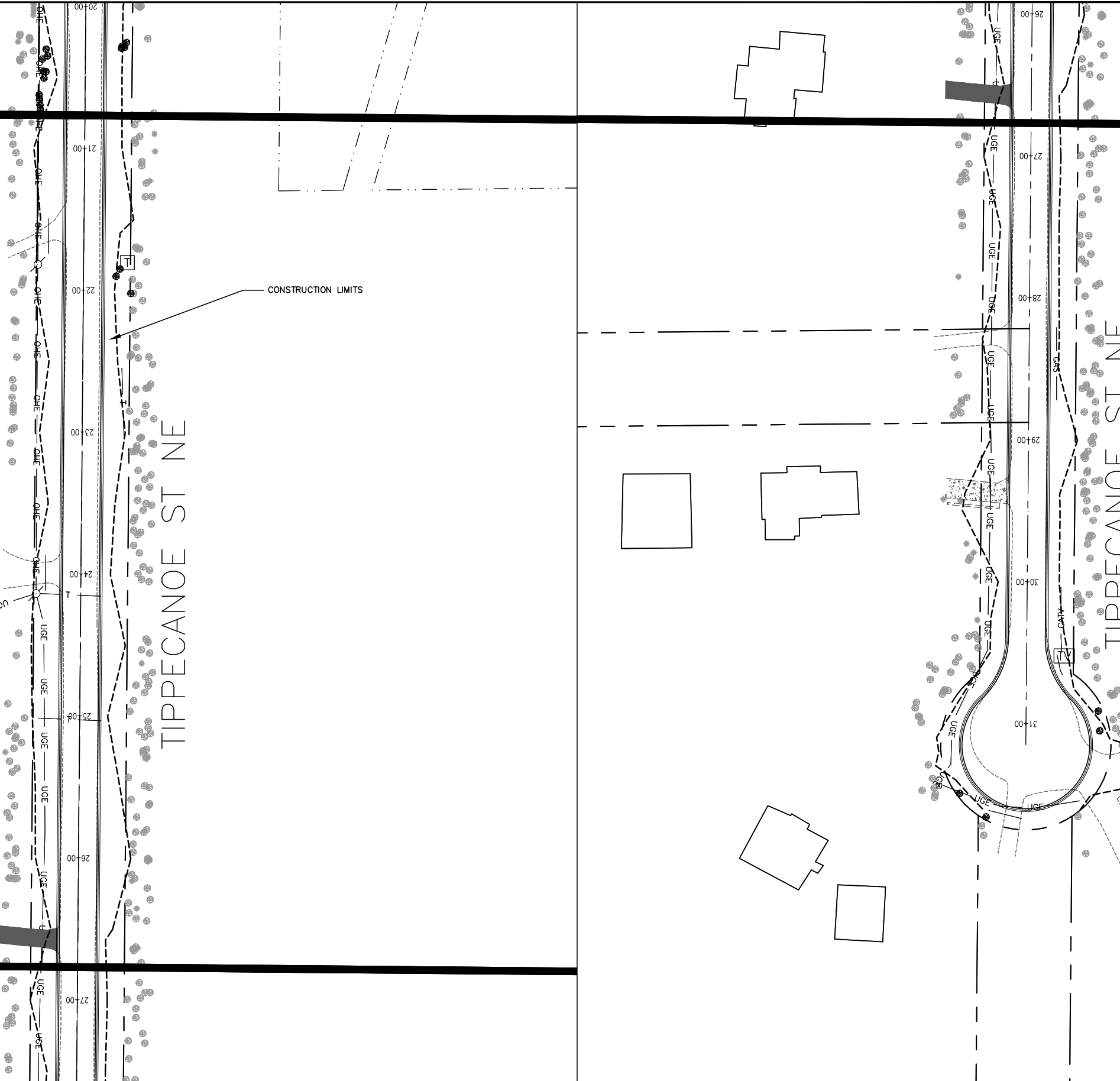
- NOTES:
1. ALL DISTURBED AREAS TO BE SEEDED, MULCHED AND FERTILIZED WITHIN 7 DAYS OF ROUGH GRADING.
 2. SEE TREE REMOVAL SHEETS FOR DETAILS ON TREE REMOVAL.
 3. ALL LOCATIONS OF STOCKPILES SHALL BE SUBMITTED FOR THE CITY ENGINEERS APPROVAL PRIOR TO STOCKPILING. ALL EROSION CONTROL FOR STOCKPILES SHALL BE PER BMP'S AND SWPPP.
 4. ALL SILT FENCE MUST BE IN PLACE BEFORE ANY LAND IS DISTURBED.

LEGEND

-  TREES TO REMOVE (ACRE)
-  TREES TO REMOVE (EACH)
-  TREES TO REMAIN



TIPPECANOE STREET	
CLEARING (TREE)	4
GRUBBING (TREE)	4
CLEARING (ACRE)	0
GRUBBING (ACRE)	0



MATCHLINE



UTILITIES:

CENTURYLINK	(763) 712-5017
CENTERPOINT ENERGY	(763) 323-2760
COMCAST	(952) 607-4078
CONNEXUS ENERGY	(763) 323-4268
GREAT RIVERS ENERGY	(763) 445-5984
XCEL ENERGY	(612) 526-4508

DATE	REVISION HISTORY
3/15/22	REMOVAL AREAS

I HEREBY CERTIFY THAT THIS PLAN WAS PREPARED BY ME OR UNDER MY DIRECT SUPERVISION AND THAT I AM A DULY REGISTERED PROFESSIONAL ENGINEER UNDER THE LAWS OF THE STATE OF MINNESOTA.

Dave Krueger

DATE 2/3/2022 REG. NO. 48768

RFC ENGINEERING, INC.
Consulting Engineers

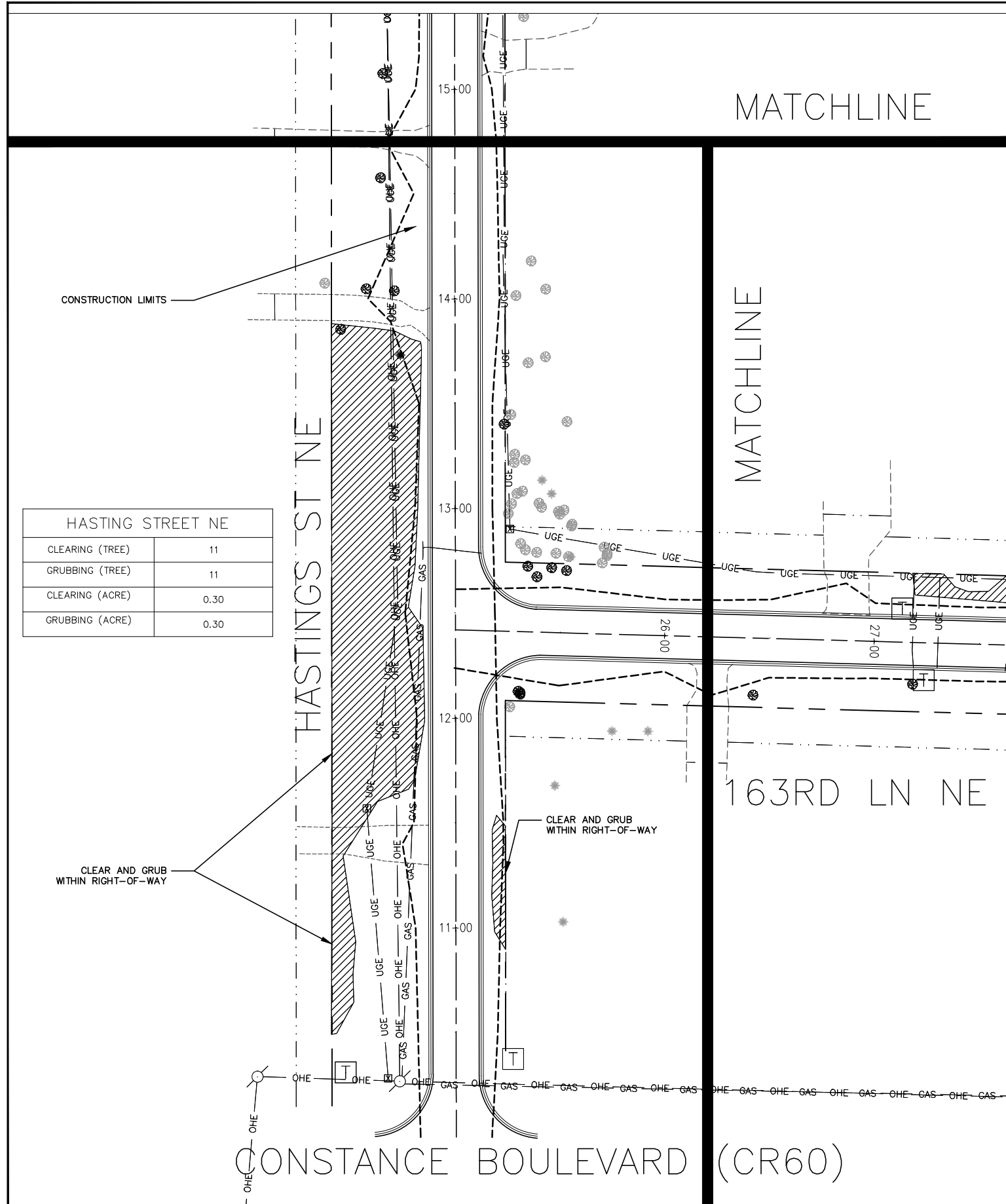
13635 Johnson Street
 Ham Lake, MN 55304
 Telephone 763-862-8000
 Fax 763-862-8042

HAM LAKE IMPROVEMENT PROJECT
 POLK ST, TIPPECANOE ST, MEADOW PARK, CREEK VALLEY

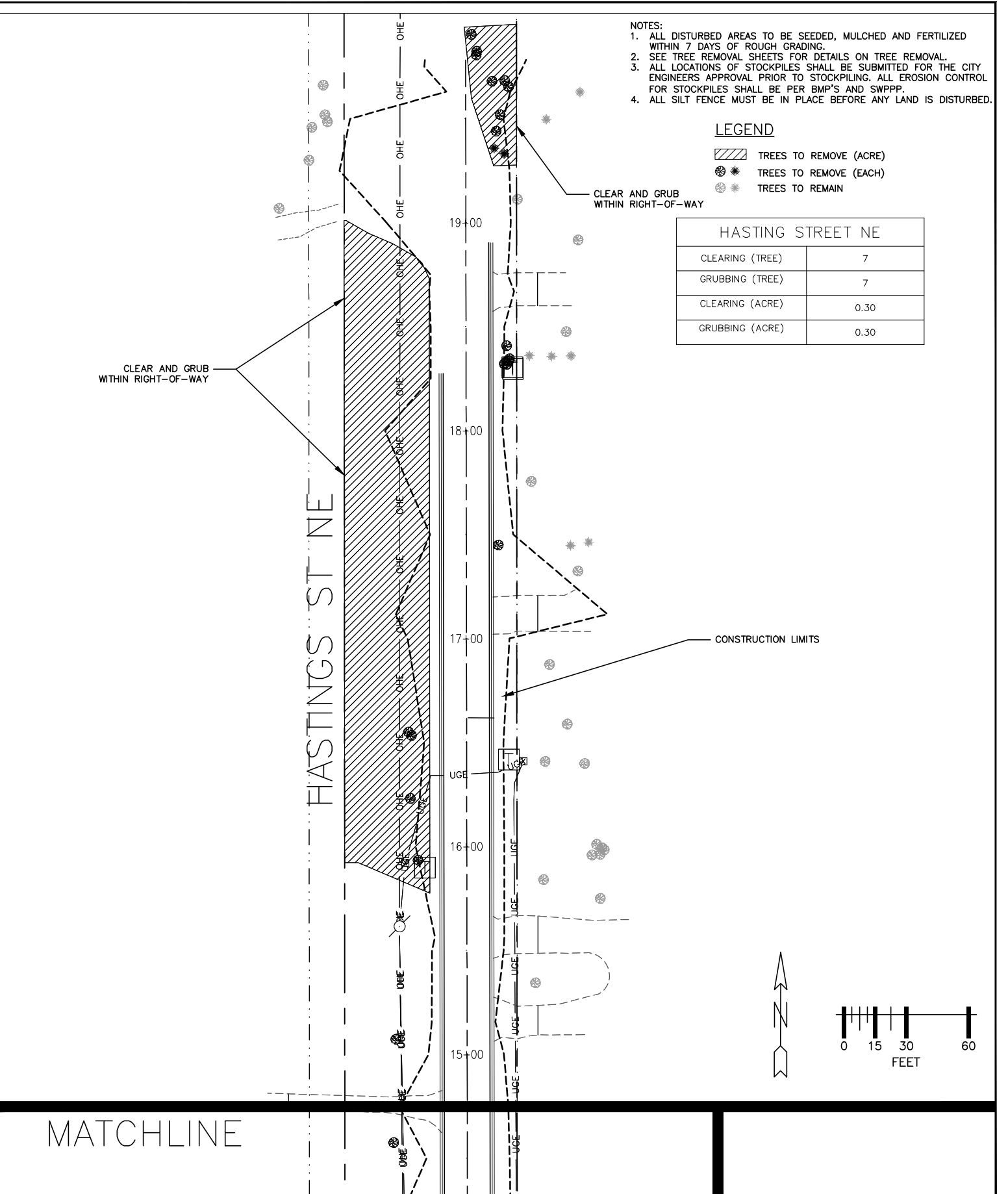
TIPPECANOE STREET NE
 TREE REMOVAL PLAN

DESIGN BY: DAK DRAWN BY: KDD CHECKED BY: TPC

DWG: 2109 REMOVAL 2
 DATE: 2/3/2022
 JOB NUMBER: 2202.035
 SHEET: 4 OF 12
 FILE: 34-2-104



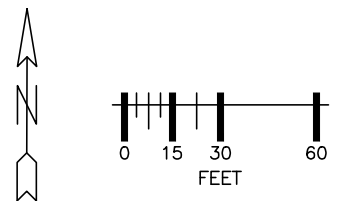
HASTINGS STREET NE	
CLEARING (TREE)	11
GRUBBING (TREE)	11
CLEARING (ACRE)	0.30
GRUBBING (ACRE)	0.30



- NOTES:
1. ALL DISTURBED AREAS TO BE SEEDED, MULCHED AND FERTILIZED WITHIN 7 DAYS OF ROUGH GRADING.
 2. SEE TREE REMOVAL SHEETS FOR DETAILS ON TREE REMOVAL.
 3. ALL LOCATIONS OF STOCKPILES SHALL BE SUBMITTED FOR THE CITY ENGINEERS APPROVAL PRIOR TO STOCKPILING. ALL EROSION CONTROL FOR STOCKPILES SHALL BE PER BMP'S AND SWPPP.
 4. ALL SILT FENCE MUST BE IN PLACE BEFORE ANY LAND IS DISTURBED.

- LEGEND
- TREES TO REMOVE (ACRE)
 - TREES TO REMOVE (EACH)
 - TREES TO REMAIN

HASTING STREET NE	
CLEARING (TREE)	7
GRUBBING (TREE)	7
CLEARING (ACRE)	0.30
GRUBBING (ACRE)	0.30



OPPER STATE ONE CALL
800-252-1166 651-454-0002

UTILITIES:

CENTURYLINK	(763) 712-5017
CENTERPOINT ENERGY	(763) 323-2760
COMCAST	(952) 607-4078
CONNEXUS ENERGY	(763) 323-4268
GREAT RIVERS ENERGY	(763) 445-5984
XCEL ENERGY	(612) 526-4508

DATE	REVISION HISTORY
3/15/22	REMOVAL AREAS

I HEREBY CERTIFY THAT THIS PLAN WAS PREPARED BY ME OR UNDER MY DIRECT SUPERVISION AND THAT I AM A DULY REGISTERED PROFESSIONAL ENGINEER UNDER THE LAWS OF THE STATE OF MINNESOTA.
Dore Krueger
DATE 2/3/2022 REG. NO. 48768

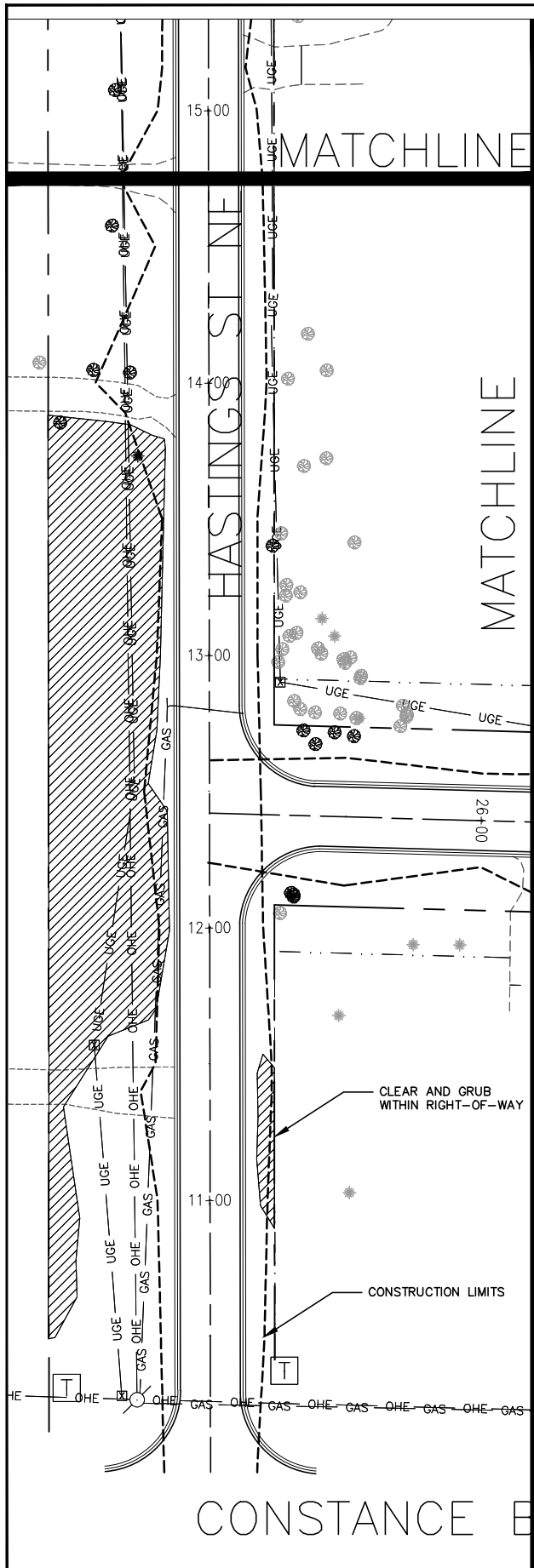
RFC ENGINEERING, INC.
Consulting Engineers

13635 Johnson Street
Ham Lake, MN 55304
Telephone 763-862-8000
Fax 763-862-8042

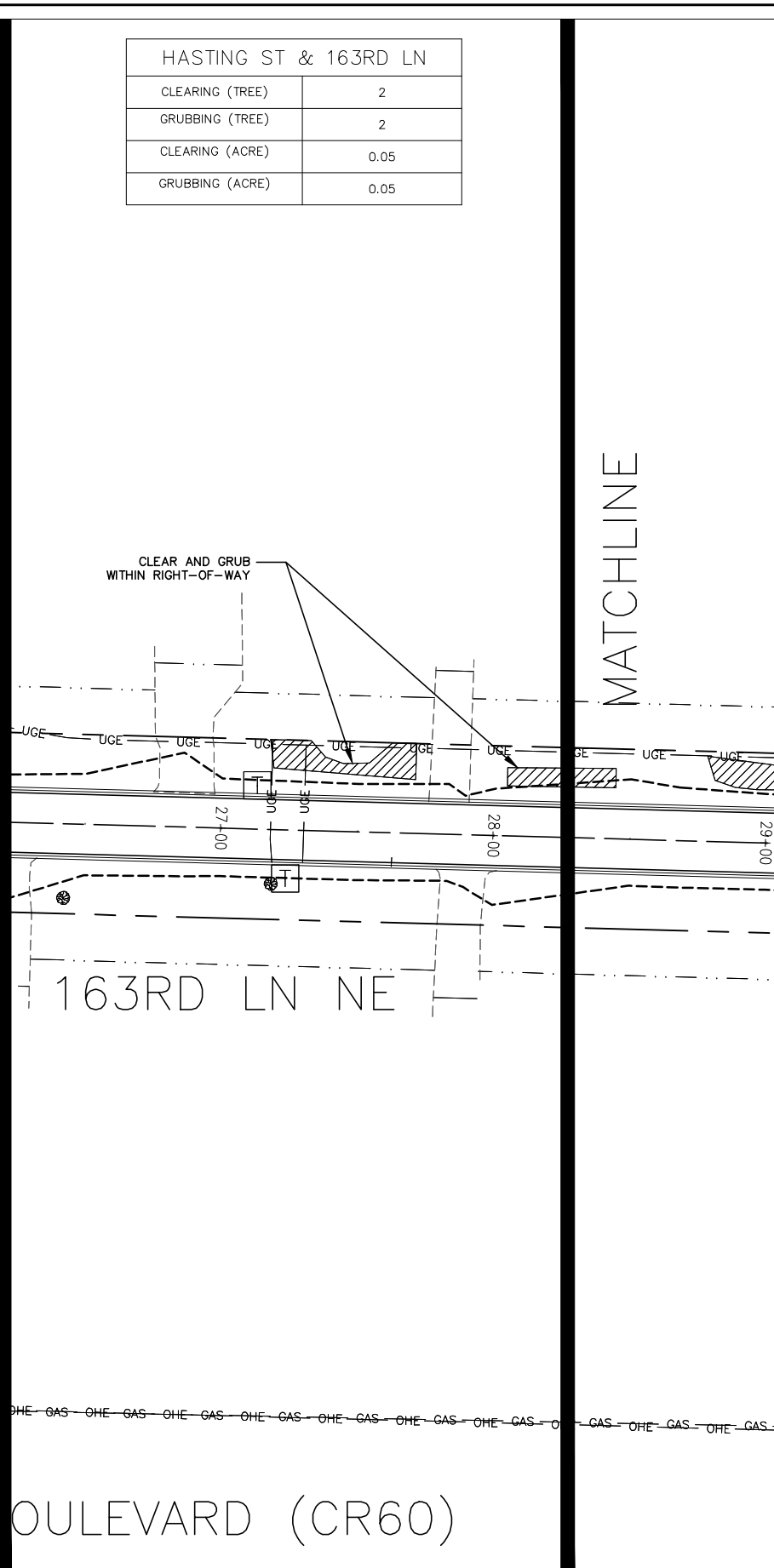
HAM LAKE IMPROVEMENT PROJECT
POLK ST, TIPPECANOE ST, MEADOW PARK, CREEK VALLEY
MEADOW PARK
TREE REMOVAL PLAN

DWG: 2103 REMOVAL_1
DATE: 2/3/2022
JOB NUMBER: 2202.035
SHEET: 5 OF 12
FILE: 34-2-105

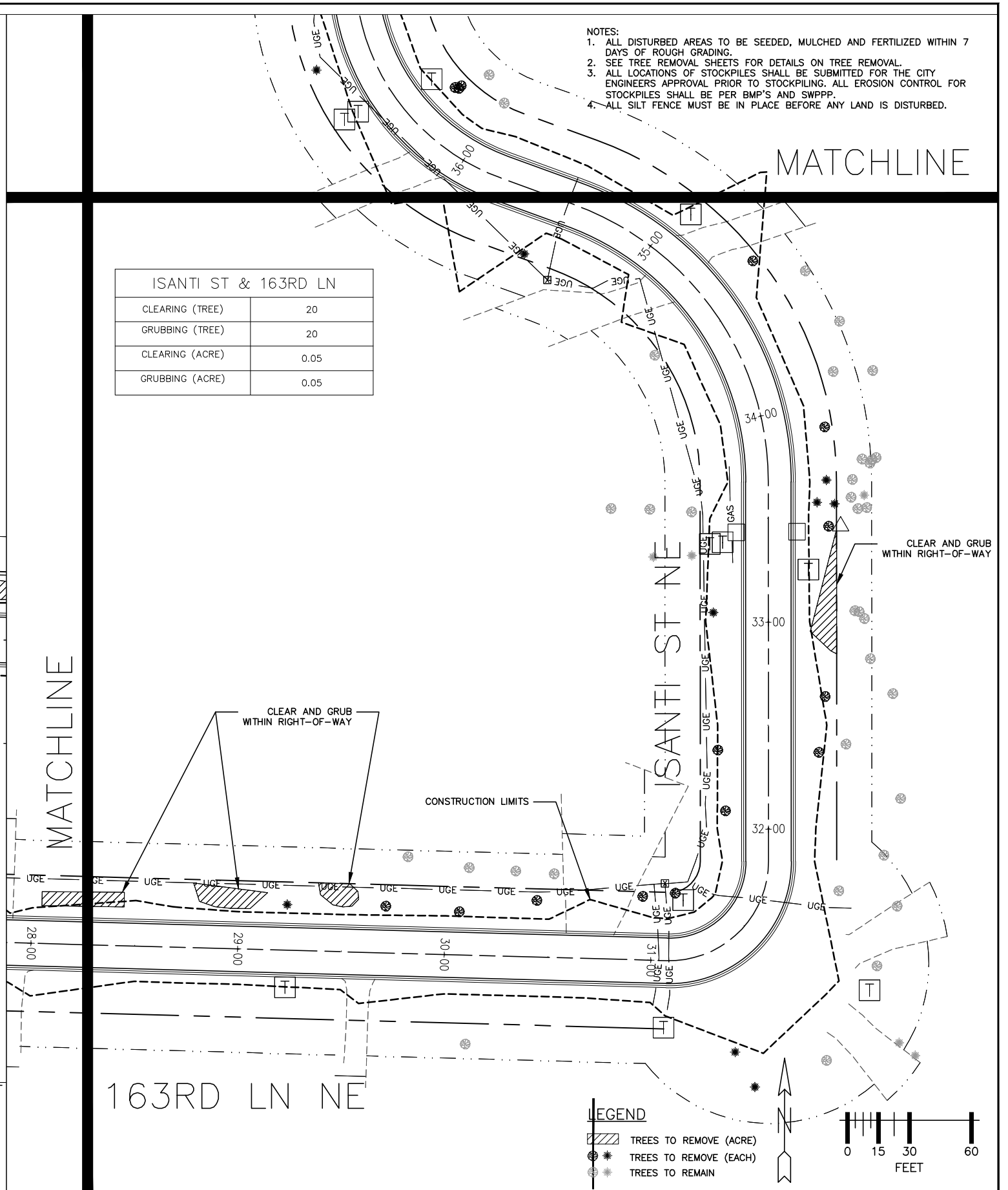
DESIGN BY: DAK DRAWN BY: KDD CHECKED BY: TPC



HASTING ST & 163RD LN	
CLEARING (TREE)	2
GRUBBING (TREE)	2
CLEARING (ACRE)	0.05
GRUBBING (ACRE)	0.05



ISANTI ST & 163RD LN	
CLEARING (TREE)	20
GRUBBING (TREE)	20
CLEARING (ACRE)	0.05
GRUBBING (ACRE)	0.05



- NOTES:
1. ALL DISTURBED AREAS TO BE SEED, MULCHED AND FERTILIZED WITHIN 7 DAYS OF ROUGH GRADING.
 2. SEE TREE REMOVAL SHEETS FOR DETAILS ON TREE REMOVAL.
 3. ALL LOCATIONS OF STOCKPILES SHALL BE SUBMITTED FOR THE CITY ENGINEERS APPROVAL PRIOR TO STOCKPILING. ALL EROSION CONTROL FOR STOCKPILES SHALL BE PER BMP'S AND SWPPP.
 4. ALL SILT FENCE MUST BE IN PLACE BEFORE ANY LAND IS DISTURBED.

LEGEND

- TREES TO REMOVE (ACRE)
- TREES TO REMOVE (EACH)
- TREES TO REMAIN

0 15 30 60 FEET

800-252-1166 651-454-0002

UTILITIES:	CENTURYLINK (763) 712-5017
	CENTERPOINT ENERGY (763) 323-2760
	COMCAST (952) 607-4078
	CONNEXUS ENERGY (763) 323-4268
	GREAT RIVERS ENERGY (763) 445-5984
	XCEL ENERGY (612) 526-4508

DATE	REVISION HISTORY
3/15/22	REMOVAL AREAS

I HEREBY CERTIFY THAT THIS PLAN WAS PREPARED BY ME OR UNDER MY DIRECT SUPERVISION AND THAT I AM A DULY REGISTERED PROFESSIONAL ENGINEER UNDER THE LAWS OF THE STATE OF MINNESOTA.

Doree Kuehn

DATE 2/3/2022 REG. NO. 48768

RFC ENGINEERING, INC.
Consulting Engineers

13635 Johnson Street
 Ham Lake, MN 55304
 Telephone 763-862-8000
 Fax 763-862-8042

DESIGN BY: DAK

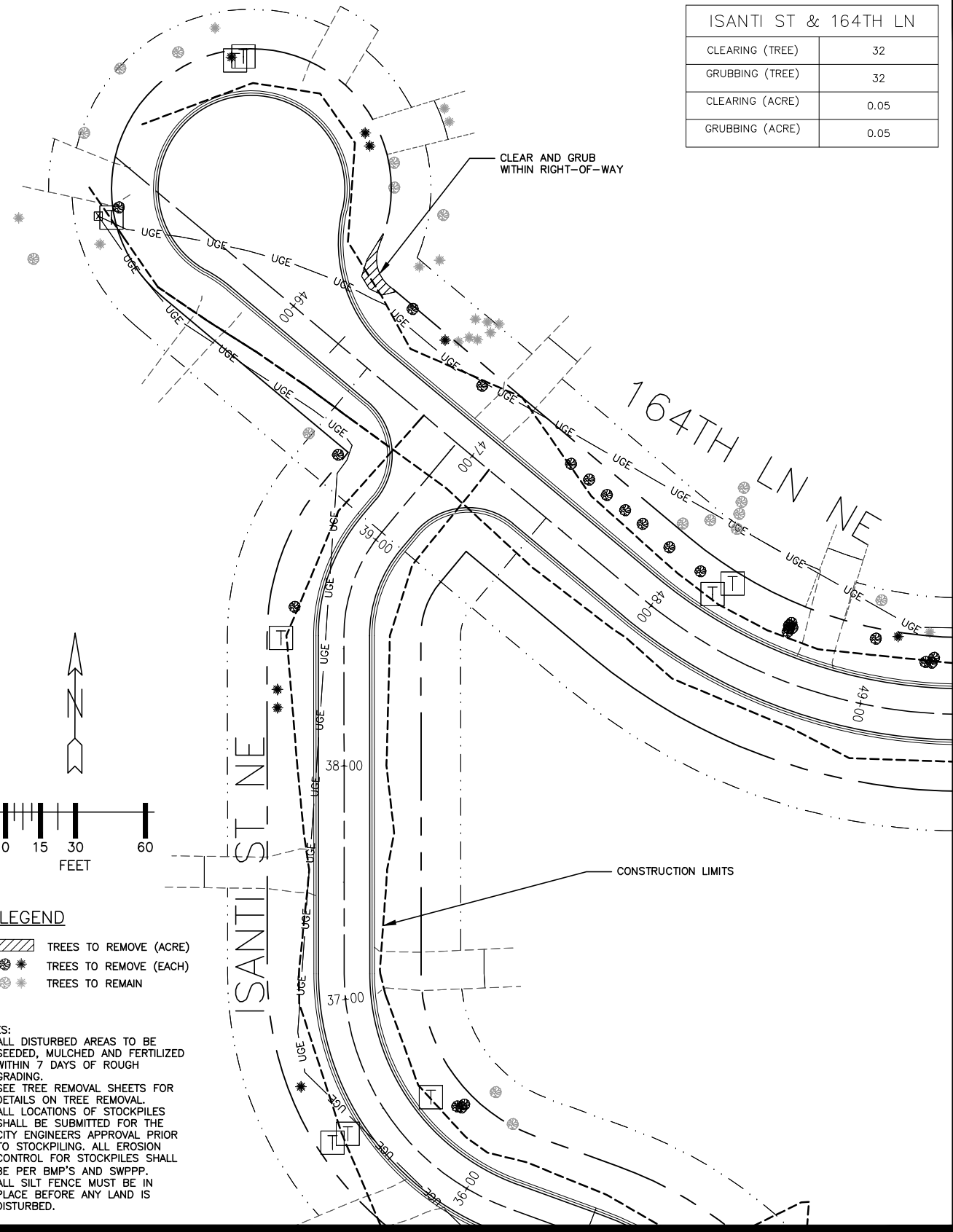
DRAWN BY: KDD

CHECKED BY: TPC

HAM LAKE IMPROVEMENT PROJECT
 POLK ST, TIPPECANOE ST, MEADOW PARK, CREEK VALLEY
 MEADOW PARK
 TREE REMOVAL PLAN

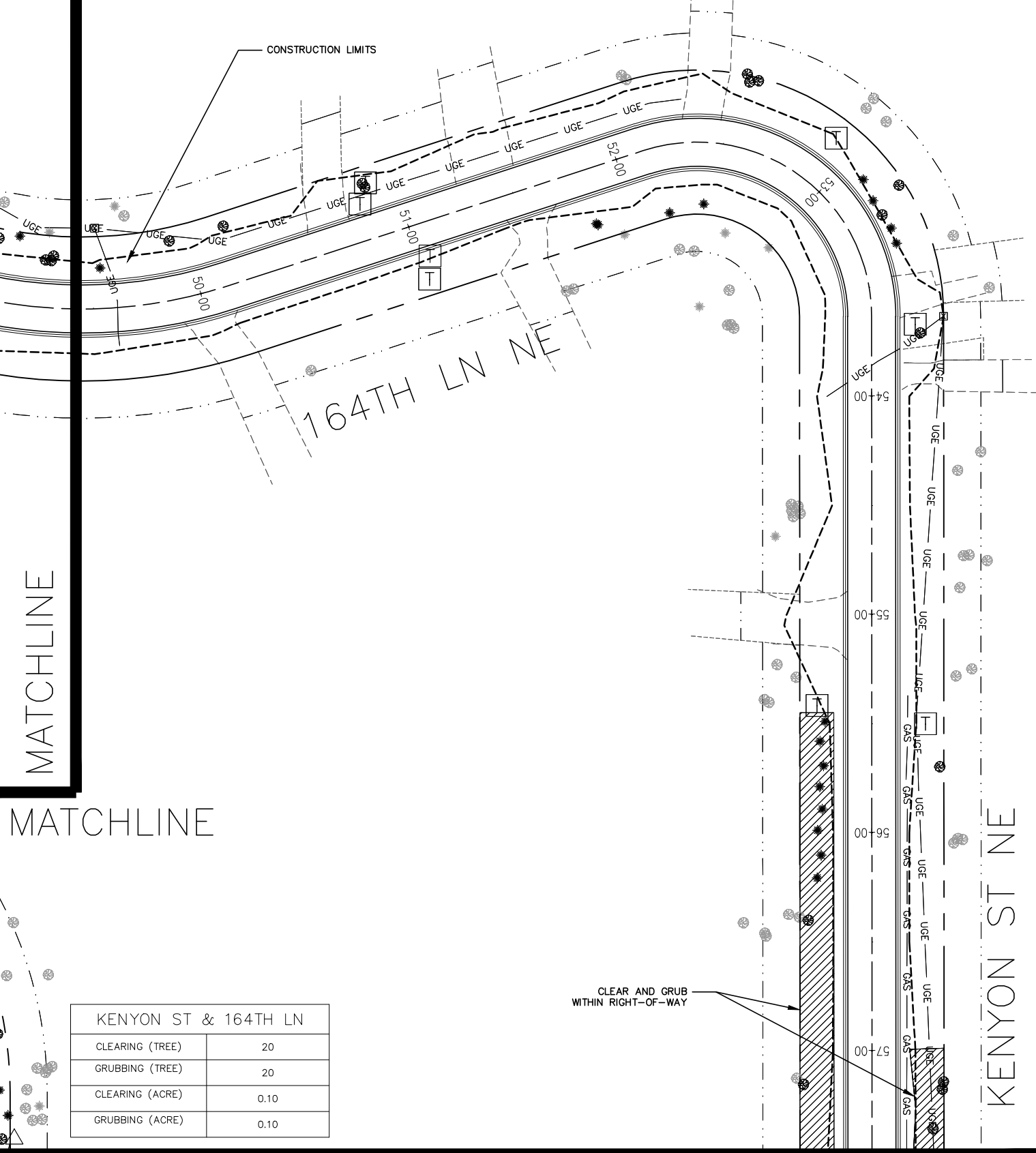
DWG: 2103 REMOVAL 2
 DATE: 2/3/2022
 JOB NUMBER: 2202.035
 SHEET: 6 OF 12
 FILE: 34-2-106

ISANTI ST & 164TH LN	
CLEARING (TREE)	32
GRUBBING (TREE)	32
CLEARING (ACRE)	0.05
GRUBBING (ACRE)	0.05



- LEGEND**
- TREES TO REMOVE (ACRE)
 - TREES TO REMOVE (EACH)
 - TREES TO REMAIN

- NOTES:**
1. ALL DISTURBED AREAS TO BE SEEDED, MULCHED AND FERTILIZED WITHIN 7 DAYS OF ROUGH GRADING.
 2. SEE TREE REMOVAL SHEETS FOR DETAILS ON TREE REMOVAL.
 3. ALL LOCATIONS OF STOCKPILES SHALL BE SUBMITTED FOR THE CITY ENGINEERS APPROVAL PRIOR TO STOCKPILING. ALL EROSION CONTROL FOR STOCKPILES SHALL BE PER BMP'S AND SWPPP.
 4. ALL SILT FENCE MUST BE IN PLACE BEFORE ANY LAND IS DISTURBED.



KENYON ST & 164TH LN	
CLEARING (TREE)	20
GRUBBING (TREE)	20
CLEARING (ACRE)	0.10
GRUBBING (ACRE)	0.10

MATCHLINE

MATCHLINE

MATCHLINE



UTILITIES:

CENTURYLINK	(763) 712-5017
CENTERPOINT ENERGY	(763) 323-2760
COMCAST	(952) 607-4078
CONNEXUS ENERGY	(763) 323-4268
GREAT RIVERS ENERGY	(763) 445-5984
XCEL ENERGY	(612) 526-4508

DATE	REVISION HISTORY
3/15/22	REMOVAL AREAS

I HEREBY CERTIFY THAT THIS PLAN WAS PREPARED BY ME OR UNDER MY DIRECT SUPERVISION AND THAT I AM A DULY REGISTERED PROFESSIONAL ENGINEER UNDER THE LAWS OF THE STATE OF MINNESOTA.

Dave Krueger

DATE 2/3/2022 REG. NO. 48768

RFC ENGINEERING, INC.
Consulting Engineers

13635 Johnson Street
 Ham Lake, MN 55304
 Telephone 763-862-8000
 Fax 763-862-8042

HAM LAKE IMPROVEMENT PROJECT
 POLK ST, TIPPECANOE ST, MEADOW PARK, CREEK VALLEY

MEADOW PARK
 TREE REMOVAL PLAN




DESIGN BY: DAK DRAWN BY: KDD CHECKED BY: TPC

DWG: 2103 REMOVAL 3
DATE: 2/3/2022
JOB NUMBER: 2202.035
SHEET: 7 OF 12
FILE: 34-2-107

MATCHLINE

- NOTES:
1. ALL DISTURBED AREAS TO BE SEEDED, MULCHED AND FERTILIZED WITHIN 7 DAYS OF ROUGH GRADING.
 2. SEE TREE REMOVAL SHEETS FOR DETAILS ON TREE REMOVAL.
 3. ALL LOCATIONS OF STOCKPILES SHALL BE SUBMITTED FOR THE CITY ENGINEERS APPROVAL PRIOR TO STOCKPILING. ALL EROSION CONTROL FOR STOCKPILES SHALL BE PER BMP'S AND SWPPP.
 4. ALL SILT FENCE MUST BE IN PLACE BEFORE ANY LAND IS DISTURBED.

LEGEND

-  TREES TO REMOVE (ACRE)
-  TREES TO REMOVE (EACH)
-  TREES TO REMAIN

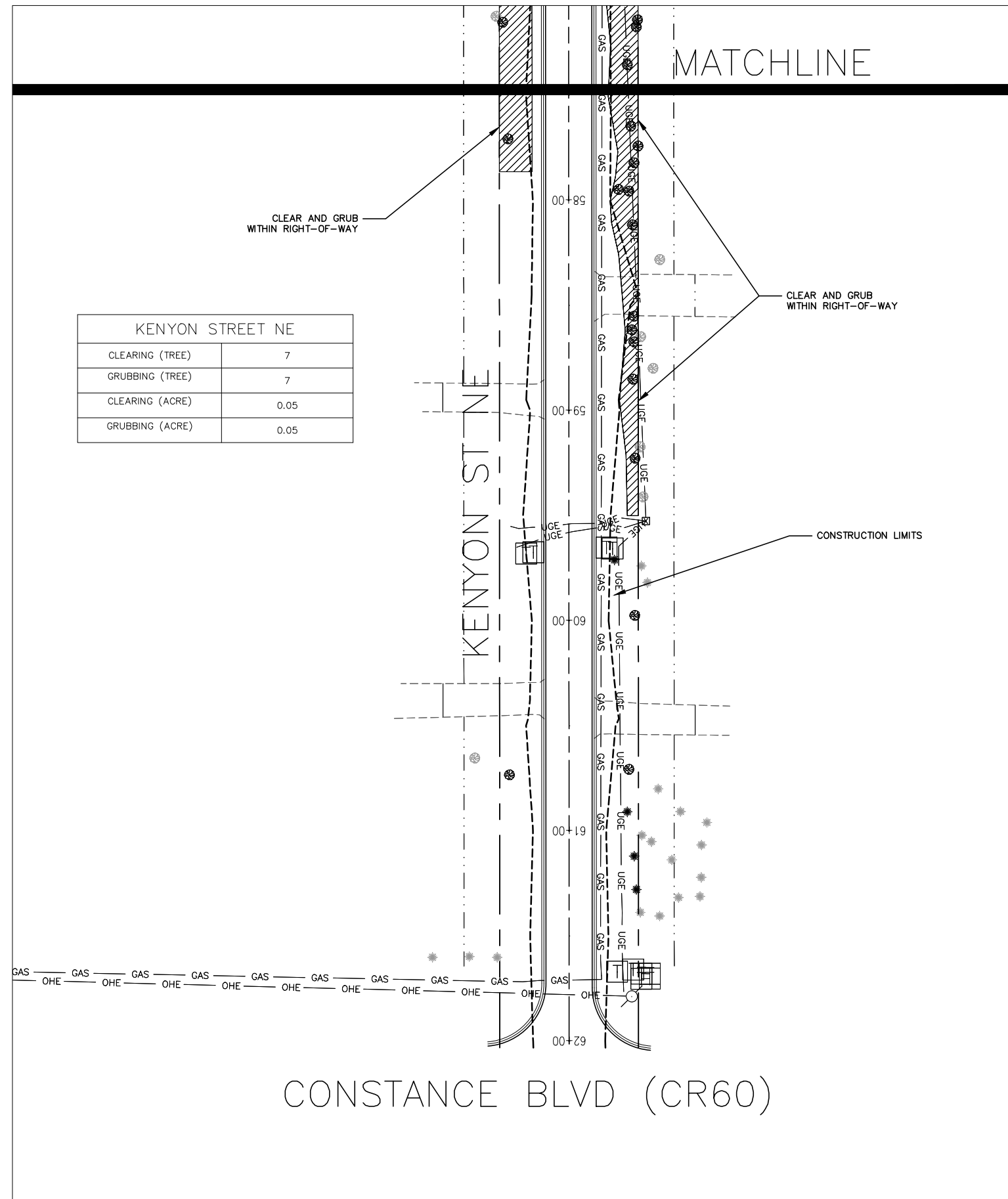
CLEAR AND GRUB WITHIN RIGHT-OF-WAY

CLEAR AND GRUB WITHIN RIGHT-OF-WAY

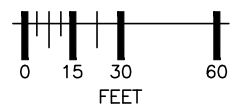
KENYON STREET NE	
CLEARING (TREE)	7
GRUBBING (TREE)	7
CLEARING (ACRE)	0.05
GRUBBING (ACRE)	0.05

KENYON ST NE

CONSTRUCTION LIMITS



CONSTANCE BLVD (CR60)



UTILITIES:

CENTURYLINK	(763) 712-5017
CENTERPOINT ENERGY	(763) 323-2760
COMCAST	(952) 607-4078
CONNEXUS ENERGY	(763) 323-4268
GREAT RIVERS ENERGY	(763) 445-5984
XCEL ENERGY	(612) 526-4508

DATE	REVISION HISTORY
3/15/22	REMOVAL AREAS

I HEREBY CERTIFY THAT THIS PLAN WAS PREPARED BY ME OR UNDER MY DIRECT SUPERVISION AND THAT I AM A DULY REGISTERED PROFESSIONAL ENGINEER UNDER THE LAWS OF THE STATE OF MINNESOTA.

Dave Roughton

DATE 2/3/2022 REG. NO. 48768

RFC ENGINEERING, INC.
Consulting Engineers

13635 Johnson Street
 Ham Lake, MN 55304
 Telephone 763-862-8000
 Fax 763-862-8042

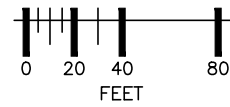
DESIGN BY: DAK DRAWN BY: KDD CHECKED BY: TPC

HAM LAKE IMPROVEMENT PROJECT
 POLK ST, TIPPECANOE ST, MEADOW PARK, CREEK VALLEY

MEADOW PARK
 TREE REMOVAL PLAN

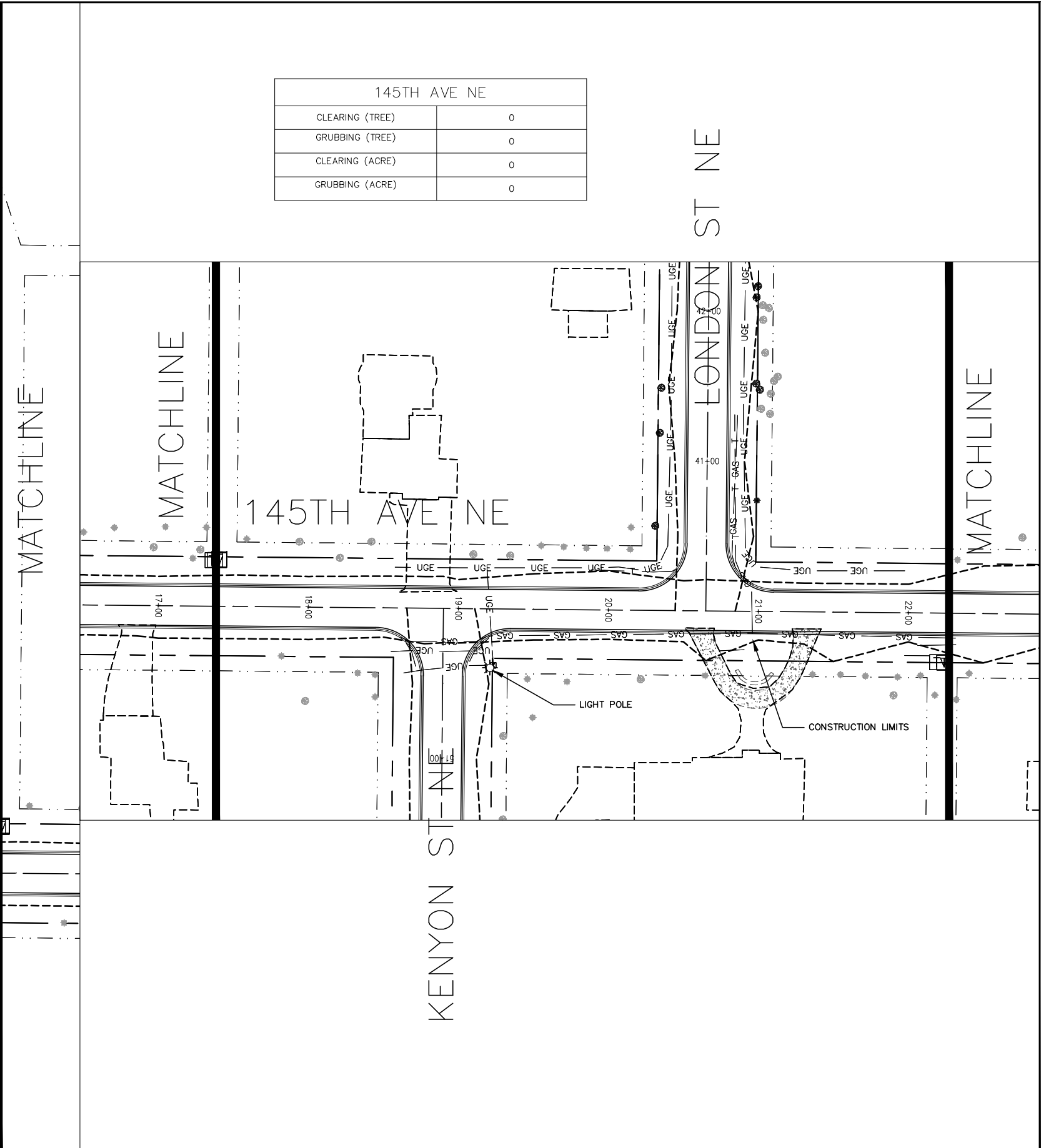
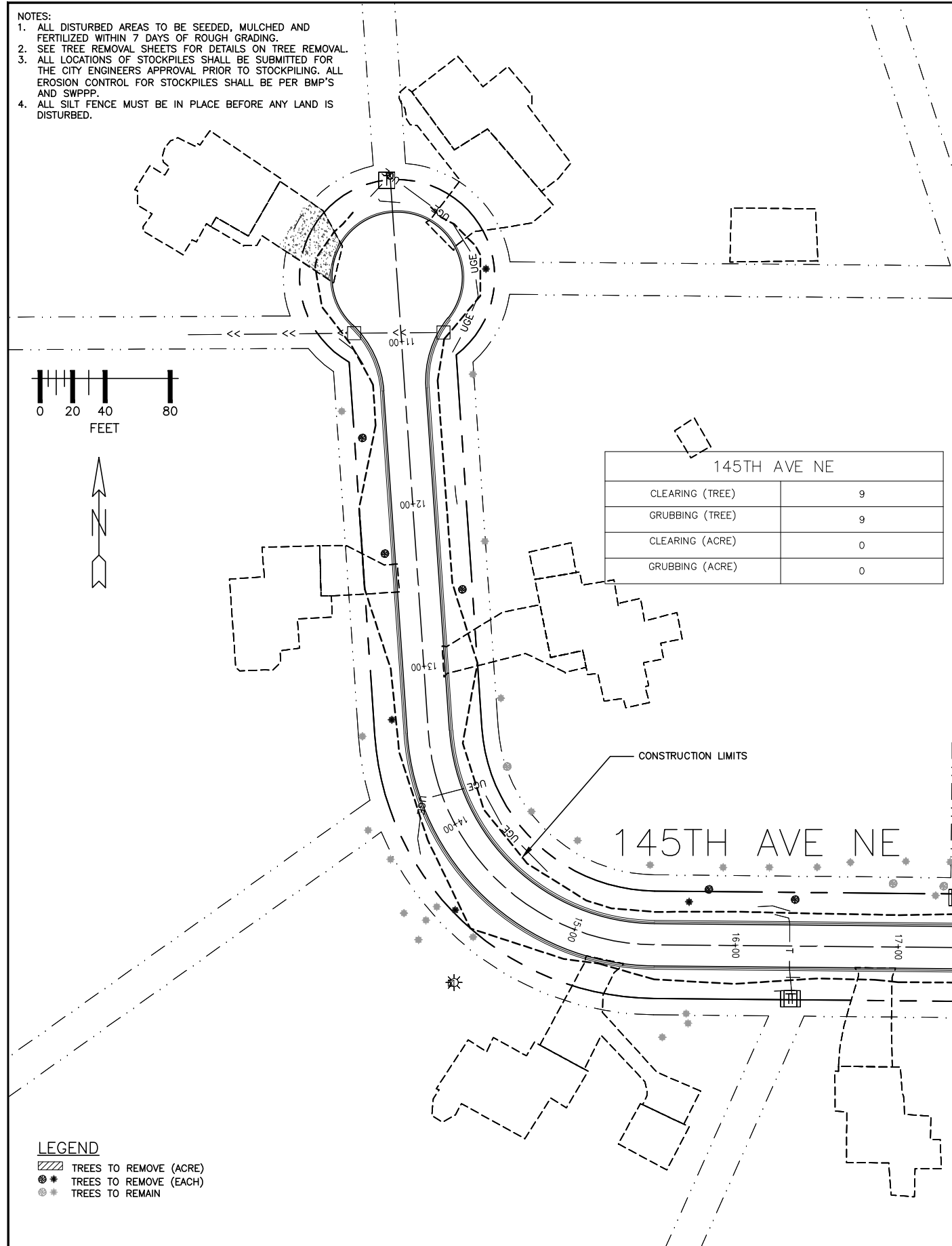
DWG: 2103 REMOVAL 4
DATE: 2/3/2022
JOB NUMBER: 2202.035
SHEET: 8 OF 12
FILE: 34-2-108

- NOTES:
1. ALL DISTURBED AREAS TO BE SEEDED, MULCHED AND FERTILIZED WITHIN 7 DAYS OF ROUGH GRADING.
 2. SEE TREE REMOVAL SHEETS FOR DETAILS ON TREE REMOVAL.
 3. ALL LOCATIONS OF STOCKPILES SHALL BE SUBMITTED FOR THE CITY ENGINEERS APPROVAL PRIOR TO STOCKPILING. ALL EROSION CONTROL FOR STOCKPILES SHALL BE PER BMP'S AND SWPPP.
 4. ALL SILT FENCE MUST BE IN PLACE BEFORE ANY LAND IS DISTURBED.



145TH AVE NE	
CLEARING (TREE)	9
GRUBBING (TREE)	9
CLEARING (ACRE)	0
GRUBBING (ACRE)	0

145TH AVE NE	
CLEARING (TREE)	0
GRUBBING (TREE)	0
CLEARING (ACRE)	0
GRUBBING (ACRE)	0



- LEGEND**
- ▨ TREES TO REMOVE (ACRE)
 - ⊗ TREES TO REMOVE (EACH)
 - ⊙ TREES TO REMAIN

UTILITIES: CENTURYLINK (763) 712-5017
 CENTERPOINT ENERGY (763) 323-2760
 COMCAST (952) 607-4078
 CONNEXUS ENERGY (763) 323-4268
 GREAT RIVERS ENERGY (763) 445-5984
 XCEL ENERGY (612) 526-4508

DATE	REVISION HISTORY
3/15/22	REMOVAL AREAS

I HEREBY CERTIFY THAT THIS PLAN WAS PREPARED BY ME OR UNDER MY DIRECT SUPERVISION AND THAT I AM A DULY REGISTERED PROFESSIONAL ENGINEER UNDER THE LAWS OF THE STATE OF MINNESOTA.

Dave Krueger
 DATE 2/3/2022 REG. NO. 48768

RFC ENGINEERING, INC.
 Consulting Engineers

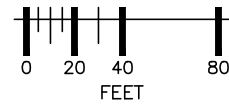
13635 Johnson Street
 Ham Lake, MN 55304
 Telephone 763-862-8000
 Fax 763-862-8042

HAM LAKE IMPROVEMENT PROJECT
 POLK ST, TIPPECANOE ST, MEADOW PARK, CREEK VALLEY
 CREEK VALLEY
 TREE REMOVAL PLAN

DWG: 2105 REMOVAL_1
 DATE: 2/3/2022
 JOB NUMBER: 2202.035
 SHEET: 9 OF 12
 FILE: 34-2-109

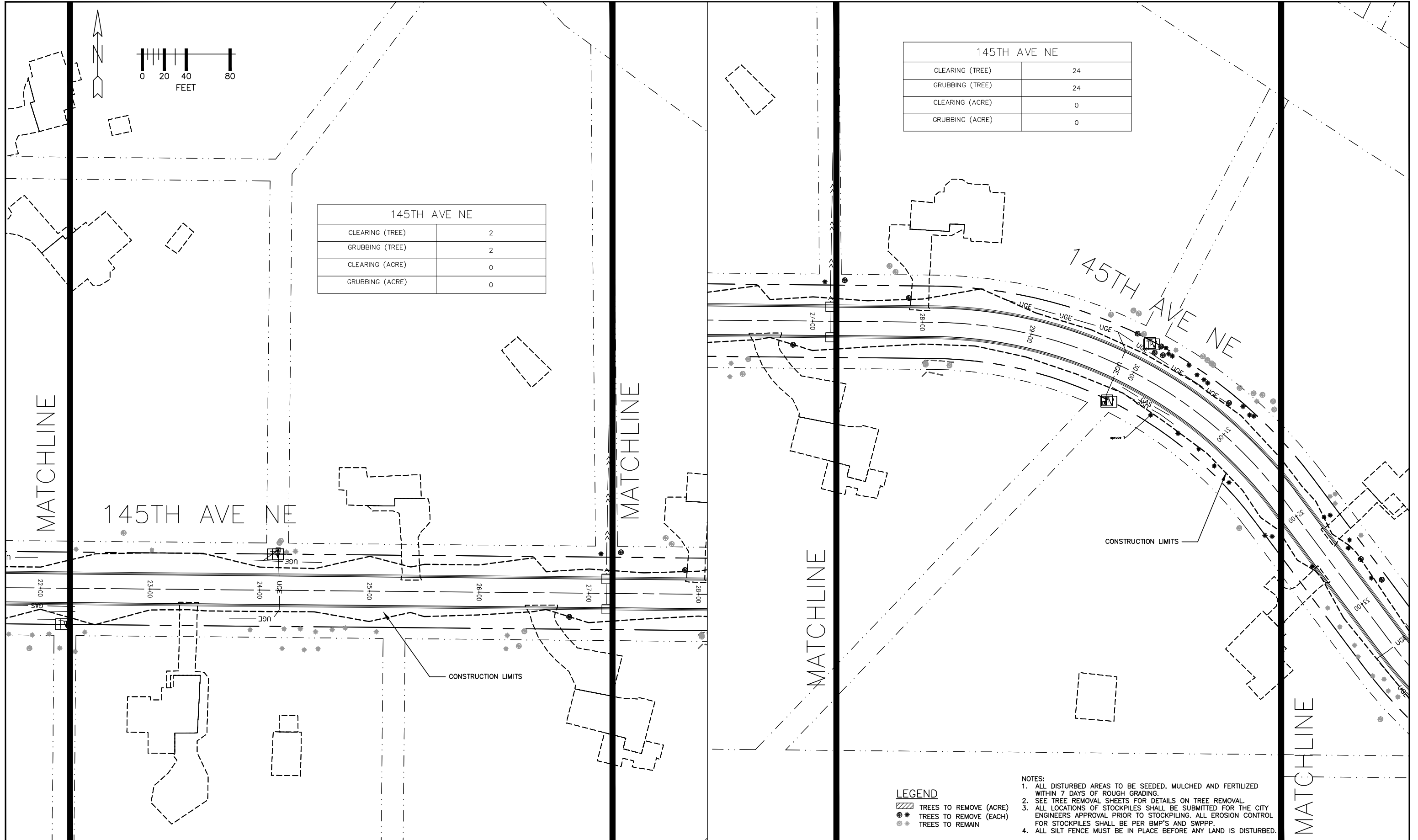


DESIGN BY: DAK DRAWN BY: KDD CHECKED BY: TPC



145TH AVE NE	
CLEARING (TREE)	2
GRUBBING (TREE)	2
CLEARING (ACRE)	0
GRUBBING (ACRE)	0

145TH AVE NE	
CLEARING (TREE)	24
GRUBBING (TREE)	24
CLEARING (ACRE)	0
GRUBBING (ACRE)	0



LEGEND

- ▨ TREES TO REMOVE (ACRE)
- ⊗ TREES TO REMOVE (EACH)
- ⊙ TREES TO REMAIN

NOTES:

1. ALL DISTURBED AREAS TO BE SEEDED, MULCHED AND FERTILIZED WITHIN 7 DAYS OF ROUGH GRADING.
2. SEE TREE REMOVAL SHEETS FOR DETAILS ON TREE REMOVAL.
3. ALL LOCATIONS OF STOCKPILES SHALL BE SUBMITTED FOR THE CITY ENGINEERS APPROVAL PRIOR TO STOCKPILING. ALL EROSION CONTROL FOR STOCKPILES SHALL BE PER BMP'S AND SWPPP.
4. ALL SILT FENCE MUST BE IN PLACE BEFORE ANY LAND IS DISTURBED.



800-252-1166 651-454-0002

UTILITIES: CENTURYLINK (763) 712-5017
 CENTERPOINT ENERGY (763) 323-2760
 COMCAST (952) 607-4078
 CONNEXUS ENERGY (763) 323-4268
 GREAT RIVERS ENERGY (763) 445-5984
 XCEL ENERGY (612) 526-4508

DATE	REVISION HISTORY
3/15/22	REMOVAL AREAS

I HEREBY CERTIFY THAT THIS PLAN WAS PREPARED BY ME OR UNDER MY DIRECT SUPERVISION AND THAT I AM A DULY REGISTERED PROFESSIONAL ENGINEER UNDER THE LAWS OF THE STATE OF MINNESOTA.
Dave Krough
 DATE 2/3/2022 REG. NO. 48768

RFC ENGINEERING, INC.
 Consulting Engineers

13635 Johnson Street
 Ham Lake, MN 55304
 Telephone 763-862-8000
 Fax 763-862-8042

DESIGN BY: DAK DRAWN BY: KDD CHECKED BY: TPC

HAM LAKE IMPROVEMENT PROJECT
 POLK ST, TIPPECANOE ST, MEADOW PARK, CREEK VALLEY
 CREEK VALLEY
 TREE REMOVAL PLAN

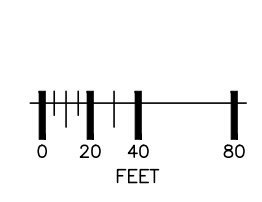
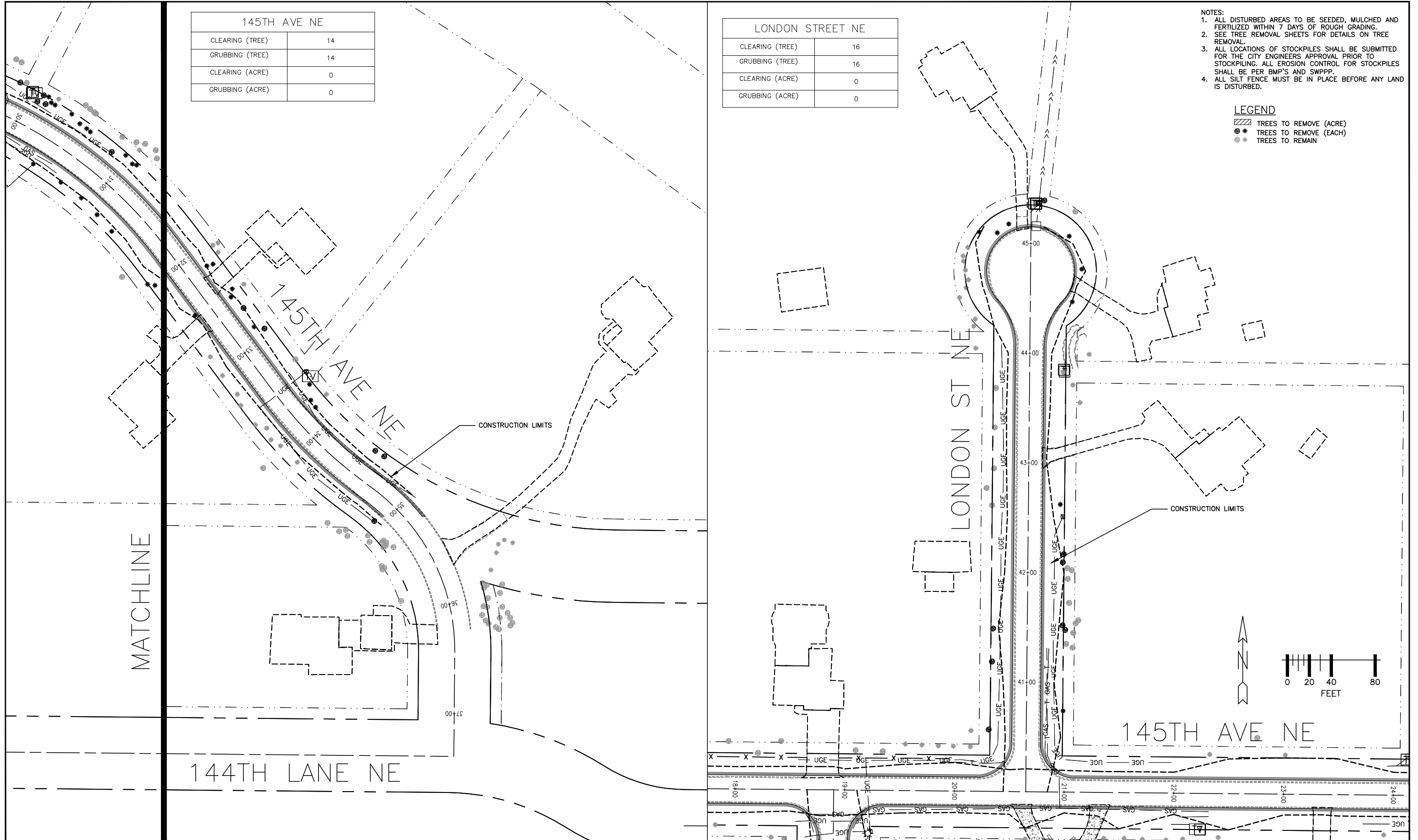
DWG: 2105 REMOVAL 2
 DATE: 2/3/2022
 JOB NUMBER: 2202.035
 SHEET: 10 OF 12
 FILE: 34-2-110

145TH AVE NE	
CLEARING (TREE)	14
GRUBBING (TREE)	14
CLEARING (ACRE)	0
GRUBBING (ACRE)	0

LONDON STREET NE	
CLEARING (TREE)	16
GRUBBING (TREE)	16
CLEARING (ACRE)	0
GRUBBING (ACRE)	0

- NOTES:
1. ALL DISTURBED AREAS TO BE SEED, MULCHED AND FERTILIZED WITHIN 7 DAYS OF ROUGH GRADING.
 2. SEE TREE REMOVAL SHEETS FOR DETAILS ON TREE REMOVAL.
 3. ALL LOCATIONS OF STOCKPILES SHALL BE SUBMITTED FOR THE CITY ENGINEERS APPROVAL PRIOR TO STOCKPILING. ALL EROSION CONTROL FOR STOCKPILES SHALL BE PER BMP'S AND SWPPP.
 4. ALL SILT FENCE MUST BE IN PLACE BEFORE ANY LAND IS DISTURBED.

- LEGEND
- TREES TO REMOVE (ACRE)
 - TREES TO REMOVE (EACH)
 - TREES TO REMAIN



OPPER STATE ONE CALL
800-252-1166 651-454-0002

UTILITIES:	CONTACT	PHONE
CENTURYLINK	(763) 712-5017	
CENTERPOINT ENERGY	(763) 323-2760	
COMCAST	(952) 607-4078	
CONNEXUS ENERGY	(763) 323-4268	
GREAT RIVERS ENERGY	(763) 445-5984	
XCEL ENERGY	(612) 526-4508	

DATE	REVISION HISTORY
3/15/22	REMOVAL AREAS

I HEREBY CERTIFY THAT THIS PLAN WAS PREPARED BY ME OR UNDER MY DIRECT SUPERVISION AND THAT I AM A DULY REGISTERED PROFESSIONAL ENGINEER UNDER THE LAWS OF THE STATE OF MINNESOTA.

Dave Krueger

DATE 2/3/2022 REG. NO. 48768

RFC ENGINEERING, INC.
Consulting Engineers

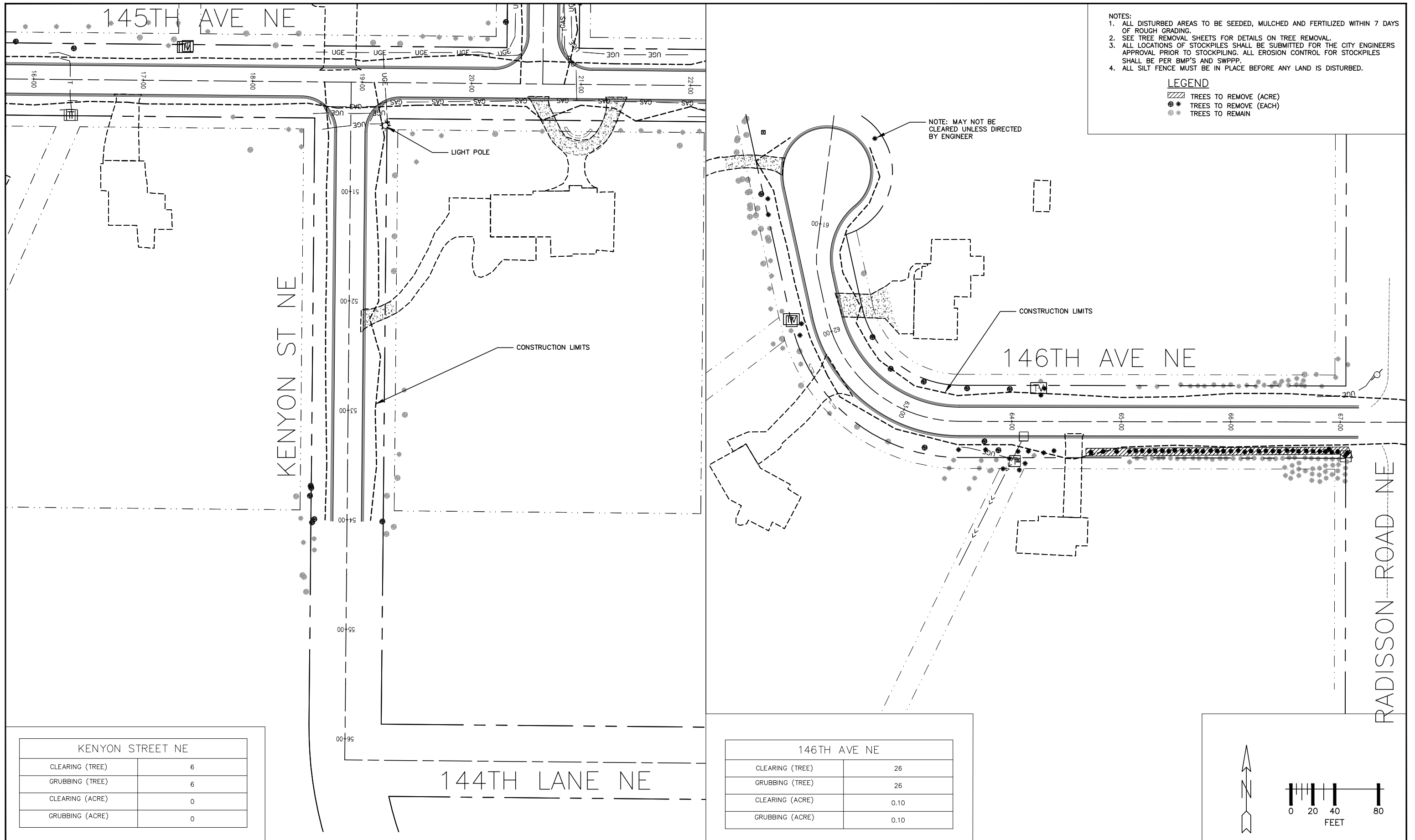
13635 Johnson Street
Ham Lake, MN 55304
Telephone 763-862-8000
Fax 763-862-8042

HAM LAKE IMPROVEMENT PROJECT
POLK ST, TIPPECANOE ST, MEADOW PARK, CREEK VALLEY

CREEK VALLEY
TREE REMOVAL PLAN

DWG: 2105 REMOVAL 3
DATE: 2/3/2022
JOB NUMBER: 2202.035
SHEET: 11 OF 12
FILE: 34-2-111

DESIGN BY: DAK DRAWN BY: KDD CHECKED BY: TPC

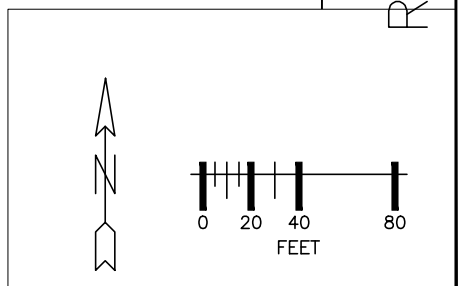


NOTES:
 1. ALL DISTURBED AREAS TO BE SEEDED, MULCHED AND FERTILIZED WITHIN 7 DAYS OF ROUGH GRADING.
 2. SEE TREE REMOVAL SHEETS FOR DETAILS ON TREE REMOVAL.
 3. ALL LOCATIONS OF STOCKPILES SHALL BE SUBMITTED FOR THE CITY ENGINEERS APPROVAL PRIOR TO STOCKPILING. ALL EROSION CONTROL FOR STOCKPILES SHALL BE PER BMP'S AND SWPPP.
 4. ALL SILT FENCE MUST BE IN PLACE BEFORE ANY LAND IS DISTURBED.

LEGEND
 [Hatched] TREES TO REMOVE (ACRE)
 [Solid Circle] TREES TO REMOVE (EACH)
 [Open Circle] TREES TO REMAIN

KENYON STREET NE	
CLEARING (TREE)	6
GRUBBING (TREE)	6
CLEARING (ACRE)	0
GRUBBING (ACRE)	0

146TH AVE NE	
CLEARING (TREE)	26
GRUBBING (TREE)	26
CLEARING (ACRE)	0.10
GRUBBING (ACRE)	0.10



UTILITIES:
 CENTURYLINK (763) 712-5017
 CENTERPOINT ENERGY (763) 323-2760
 COMCAST (952) 607-4078
 CONNEXUS ENERGY (763) 323-4268
 GREAT RIVERS ENERGY (763) 445-5984
 XCEL ENERGY (612) 526-4508

DATE	REVISION HISTORY
3/15/22	REMOVAL AREAS

I HEREBY CERTIFY THAT THIS PLAN WAS PREPARED BY ME OR UNDER MY DIRECT SUPERVISION AND THAT I AM A DULY REGISTERED PROFESSIONAL ENGINEER UNDER THE LAWS OF THE STATE OF MINNESOTA.
Dave Krueger
 DATE 2/3/2022 REG. NO. 48768

RFC ENGINEERING, INC.
 Consulting Engineers

13635 Johnson Street
 Ham Lake, MN 55304
 Telephone 763-862-8000
 Fax 763-862-8042

HAM LAKE IMPROVEMENT PROJECT
 POLK ST, TIPPECANOE ST, MEADOW PARK, CREEK VALLEY
 CREEK VALLEY
 TREE REMOVAL PLAN

DWG: 2105 REMOVAL 4
 DATE: 2/3/2022
 JOB NUMBER: 2202.035
 SHEET: 12 OF 12
 FILE: 34-2-112

DESIGN BY: DAK DRAWN BY: KDD CHECKED BY: TPC