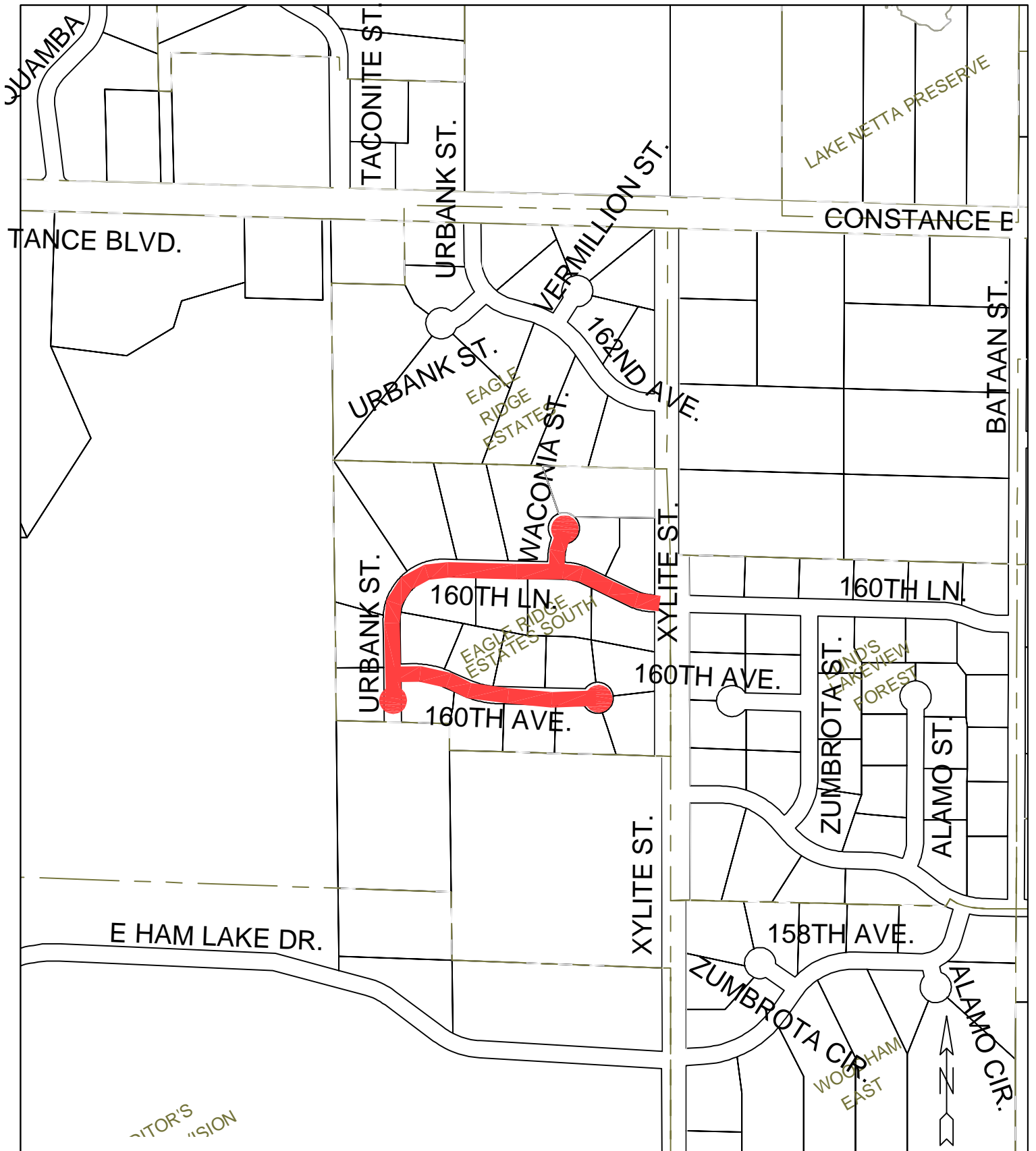


— BITUMINOUS OVERLAY

<p>Sheet Title: CITY OF HAM LAKE BITUMINOUS OVERLAY</p>	<p>Date 4/1/24</p>	<p>Scale 1"=4,000'</p>
<p>Project: OVERALL 2024 ADDITIONAL BITUMINOUS OVERLAY LOCATIONS</p>	<p>RFC ENGINEERING, INC. Consulting Engineers 13635 Johnson Street Ham Lake, MN 55304 Telephone (763) 862-8000 Fax (763) 862-8042</p>	



Sheet Title:
CITY OF HAM LAKE 2024 BITUMINOUS OVERLAY

Date
11/02/23

Scale
1" = 500'

Locations:
EAGLE RIDGE ESTATES SOUTH

RFC ENGINEERING, INC.
Consulting Engineers
13635 Johnson Street
Ham Lake, MN 55304
Telephone (763) 862-8000
Fax (763) 862-8042



Sheet Title:
CITY OF HAM LAKE 2024 BITUMINOUS OVERLAY

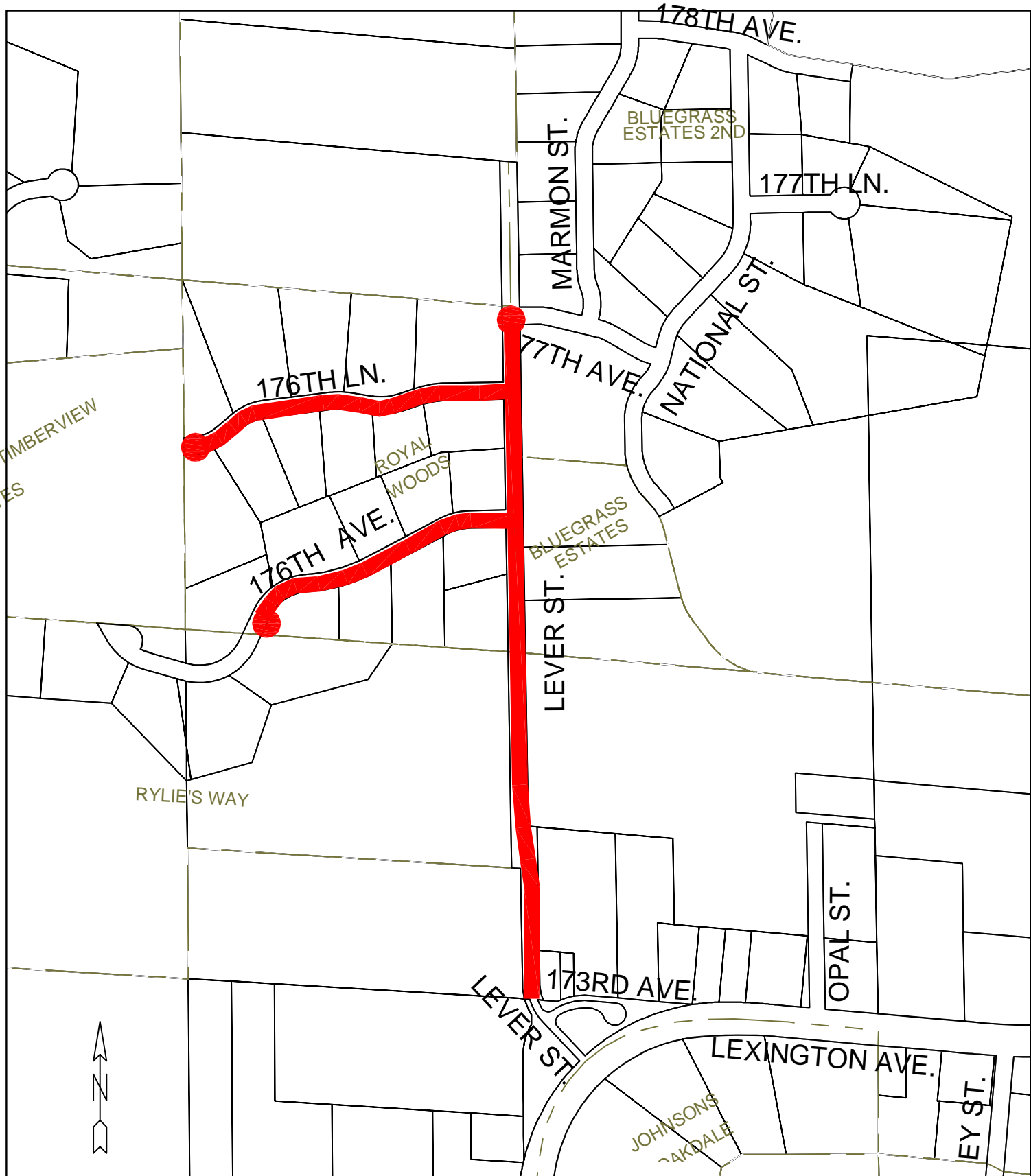
Date
11/02/23

Scale
1" = 500'

Locations:
RADISSON MEADOWS

RFC ENGINEERING, INC.
Consulting Engineers

13635 Johnson Street
Ham Lake, MN 55304
Telephone (763) 862-8000
Fax (763) 862-8042



Sheet Title:
CITY OF HAM LAKE 2024 BITUMINOUS OVERLAY

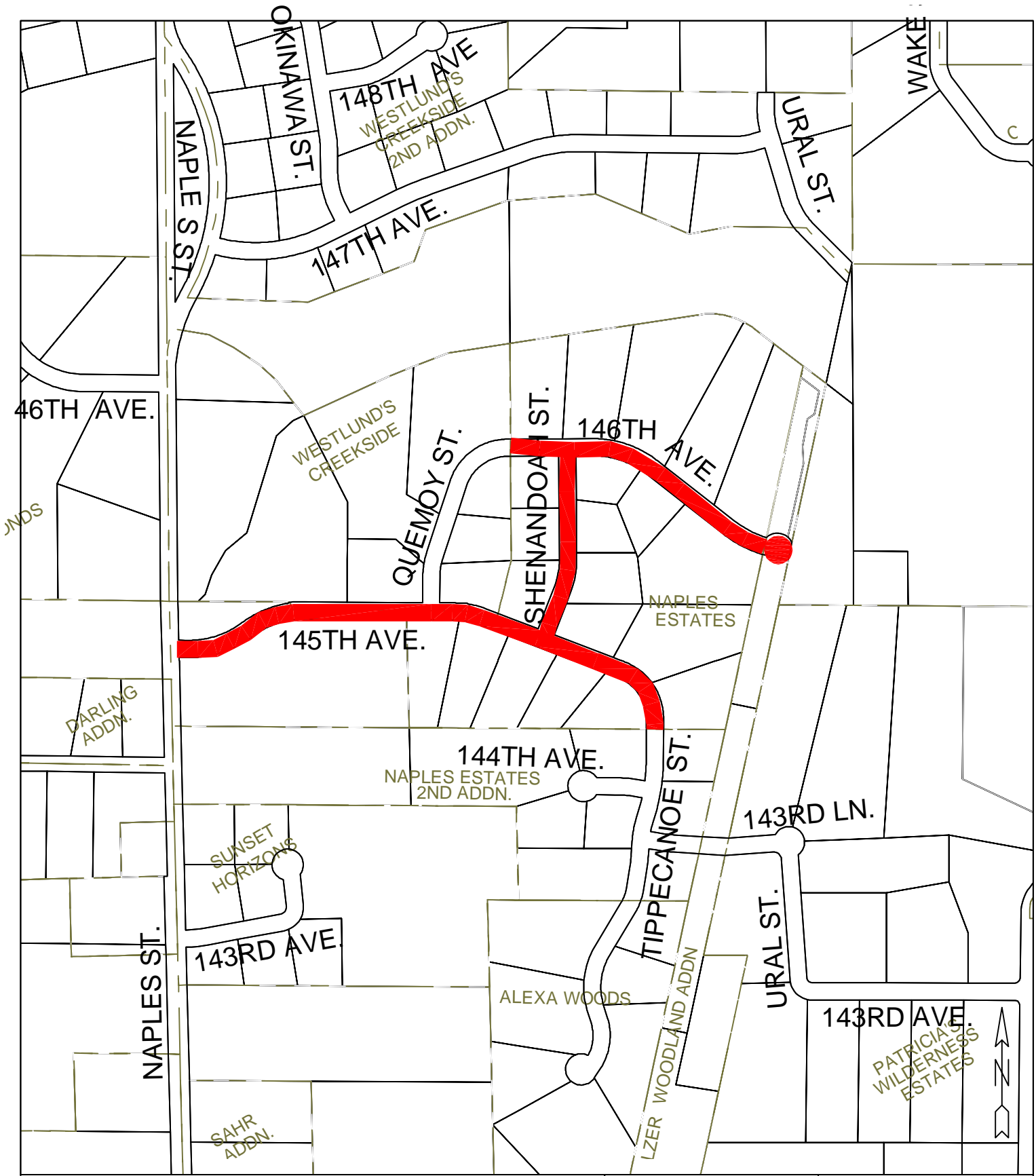
Date
11/02/23

Scale
1" = 500'

Locations:
LEVER STREET AND ROYAL WOODS

RFC ENGINEERING, INC.
Consulting Engineers

13635 Johnson Street
Ham Lake, MN 55304
Telephone (763) 862-8000
Fax (763) 862-8042



Sheet Title:
CITY OF HAM LAKE 2024 BITUMINOUS OVERLAY

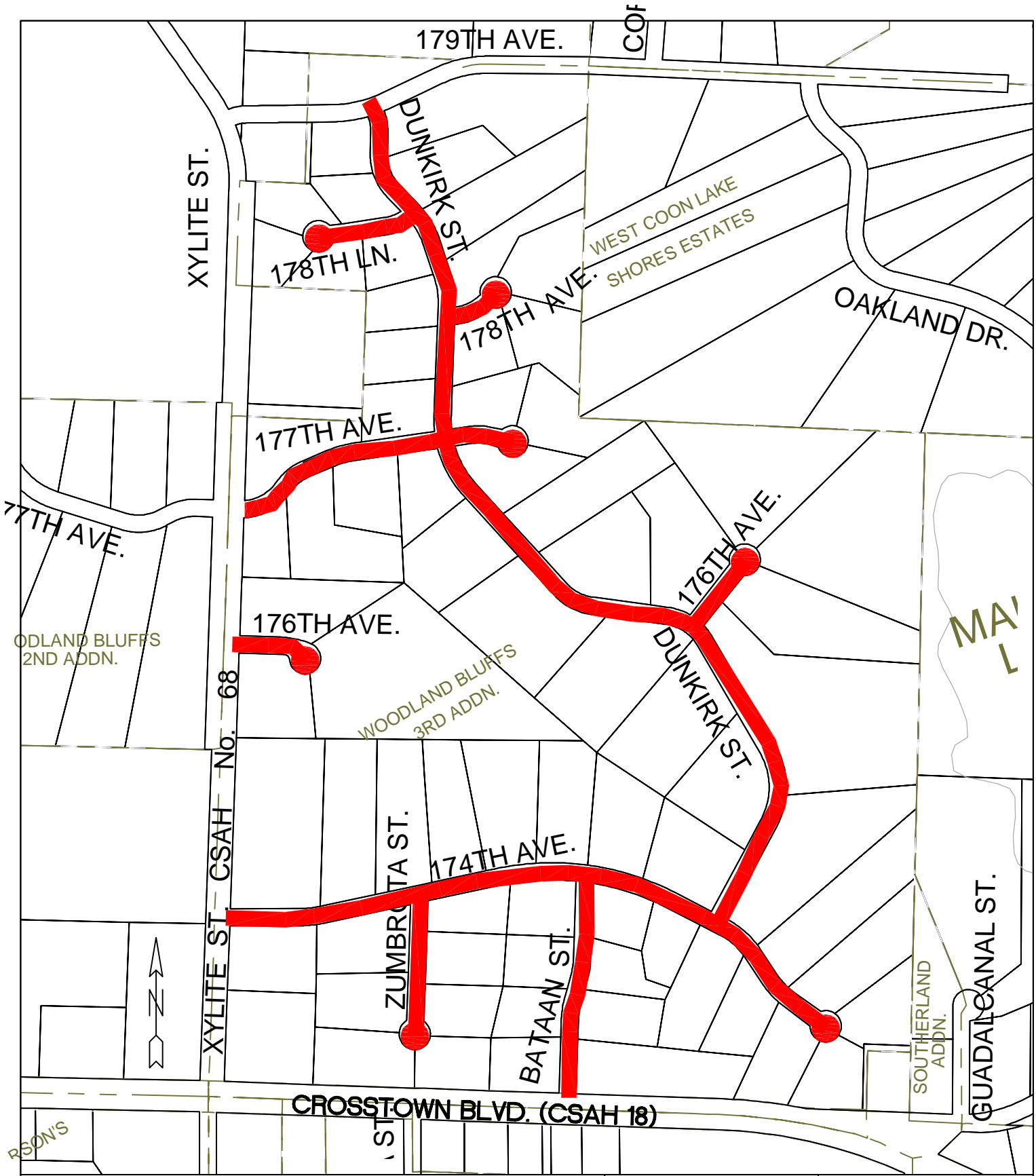
Date
11/02/23

Scale
1" = 500'

Locations:
NAPLES ESTATES

RFC ENGINEERING, INC.
Consulting Engineers

13635 Johnson Street
Ham Lake, MN 55304
Telephone (763) 862-8000
Fax (763) 862-8042



Sheet Title:
CITY OF HAM LAKE 2024 BITUMINOUS OVERLAY

Date
11/02/23

Scale
1" = 500'

Locations:
WOODLAND BLUFFS 3RD ADDITION

RFC ENGINEERING, INC.
Consulting Engineers

13635 Johnson Street
Ham Lake, MN 55304
Telephone (763) 862-8000
Fax (763) 862-8042