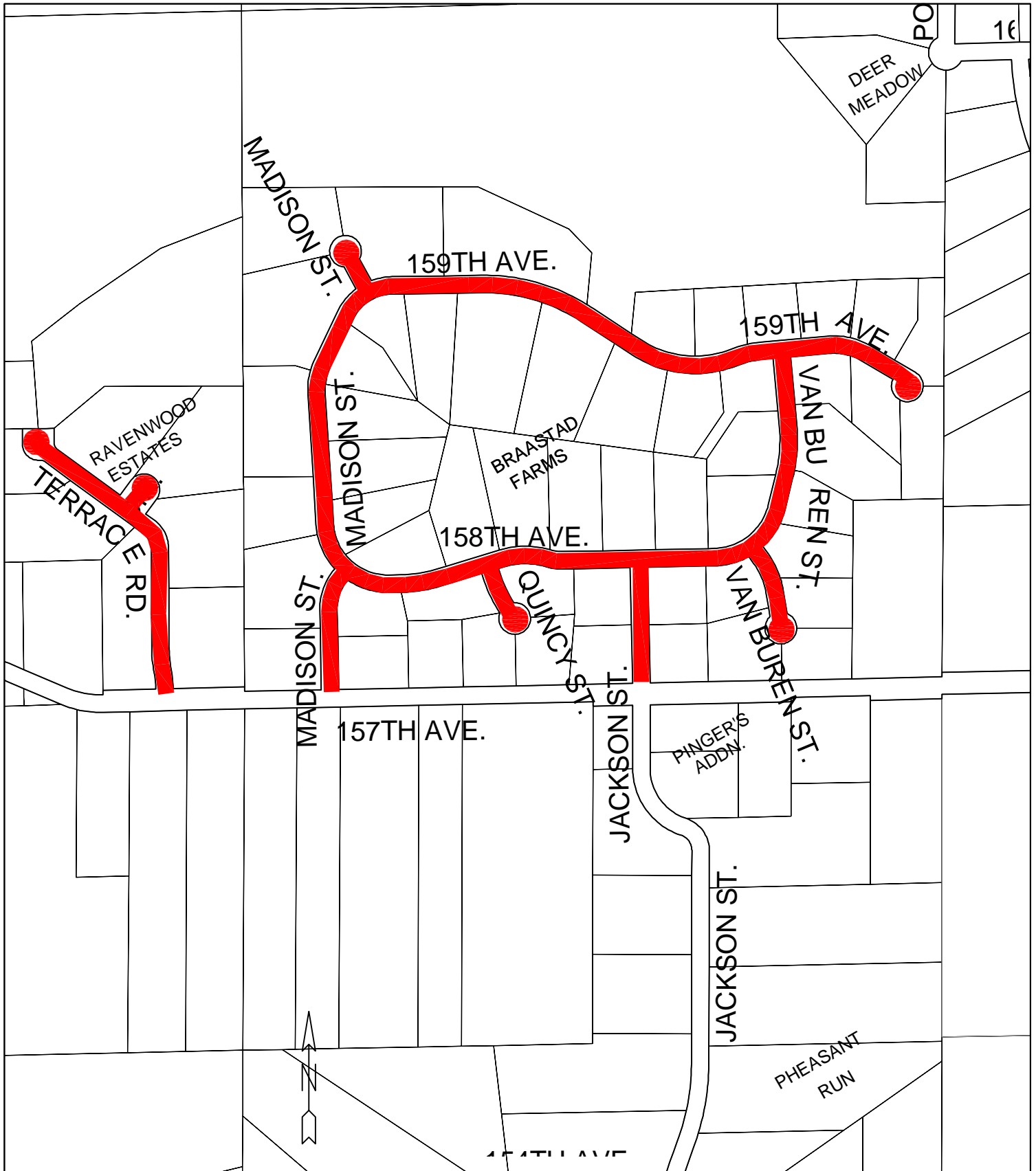


—— BITUMINOUS OVERLAY

<p>Sheet Title: CITY OF HAM LAKE BITUMINOUS OVERLAY</p>	<p>Date 12/16/24</p>	<p>Scale 1"=4,000'</p>
<p>Project: OVERALL 2025 OVERLAY LOCATIONS</p>	<p><b>RFC ENGINEERING, INC.</b>  <b>Consulting Engineers</b>          13635 Johnson Street          Ham Lake, MN 55304          Telephone (763) 862-8000          Fax (763) 862-8042</p>	



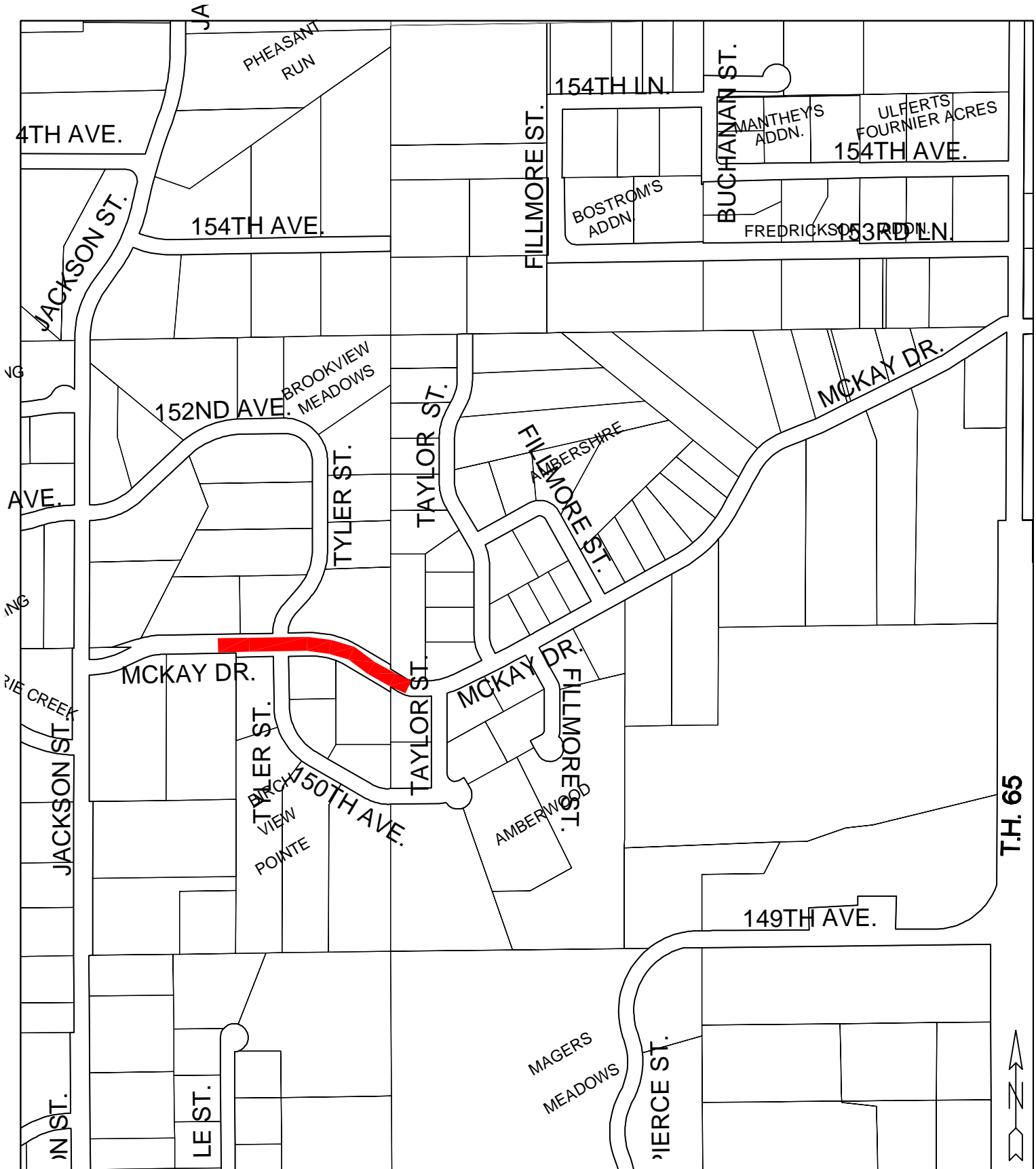
Sheet Title:  
CITY OF HAM LAKE 2025 BITUMINOUS OVERLAY

Date  
12/16/24

Scale  
1" = 500'

Locations:  
RAVENWOOD ESTATES AND  
BRAASTAD FARMS

**RFC ENGINEERING, INC.**  
**Consulting Engineers**  
13635 Johnson Street  
Ham Lake, MN 55304  
Telephone (763) 862-8000  
Fax (763) 862-8042



Sheet Title:  
CITY OF HAM LAKE 2025 BITUMINOUS OVERLAY

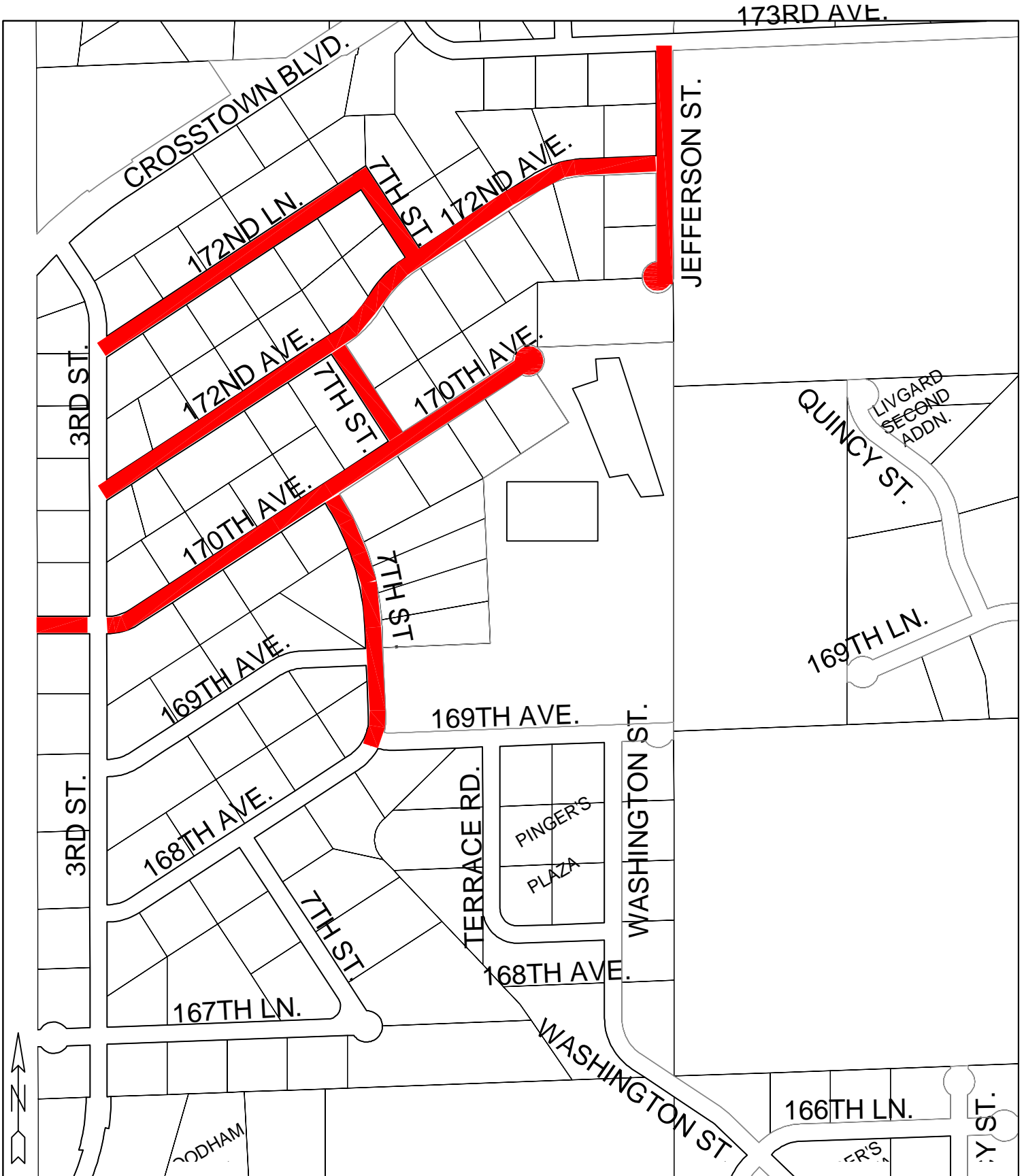
Date  
12/16/24

Scale  
1" = 500'

Locations:  
MCKAY DRIVE NE  
(600 FT. EAST OF JACKSON ST. TO  
100 FT. WEST OF TAYLOR ST.)

**RFC ENGINEERING, INC.**  
**Consulting Engineers**

13635 Johnson Street  
Ham Lake, MN 55304  
Telephone (763) 862-8000  
Fax (763) 862-8042



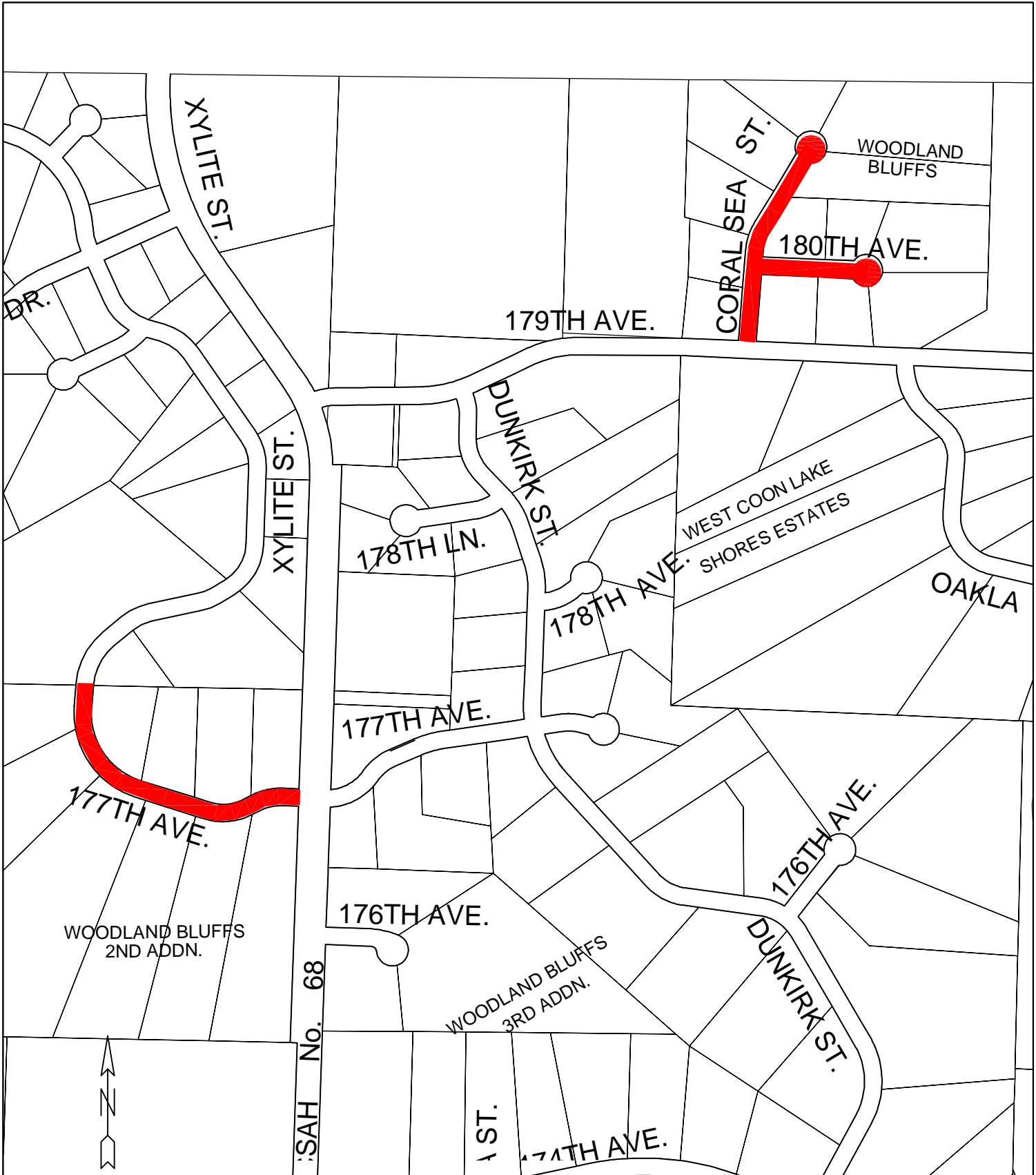
Sheet Title:  
CITY OF HAM LAKE 2025 BITUMINOUS OVERLAY

Date  
12/16/24

Scale  
1" = 500'

Locations:  
PINGER'S PLAZA

**RFC ENGINEERING, INC.**  
**Consulting Engineers**  
13635 Johnson Street  
Ham Lake, MN 55304  
Telephone (763) 862-8000  
Fax (763) 862-8042



Sheet Title:  
CITY OF HAM LAKE 2025 BITUMINOUS OVERLAY

Date  
12/16/24

Scale  
1" = 500'

Locations:  
WOODLAND BLUFFS AND  
WOODLAND BLUFFS 2ND ADDITION

**RFC ENGINEERING, INC.**  
**Consulting Engineers**  
13635 Johnson Street  
Ham Lake, MN 55304  
Telephone (763) 862-8000  
Fax (763) 862-8042